



SEVEN

P

RANCH

29th Annual **Spring Bull & Female Sale**

Saturday February 18, 2023 • 1:00 PM

At the ranch, 10678 FM 757, Winona, TX 75792



29th Annual Spring Bull Sale

We are offering 46 select black and red, Simmental and SimAngus bulls.

Most of these bulls are bred up nicely from top Simmental, Angus and SimAngus A.I. sires. We also have added in three black F1 Simbrah bulls. The bulls have been developed on what forage we had available last year and supplemented with Purina Accuration Forage Extender and Wind and Rain Mineral. They also had a daily supply of all the hay they could eat.

Again, this year, we are offering 40 select black and red, Simmental and SimAngus females. This will include bred females and pairs. Also included will be 6 Simmental and 6 SimAngus open yearling heifers that will be ready to breed this spring.

We will also offer a very nice set of 90 Simbrah females including pairs, bred females and open heifers. Most of these Simbrah females will be eligible for Golden Certification from the American Brahman Breeders Association and they will be registered with the American Simmental Association. Also included will be select group of 6 open yearling heifers ready to breed this spring.

We are again pleased to offer females from our friends Paul and Donna Bayer. This operation shares our commitment to producing good honest Simmental cattle.

Viewing of the cattle will be Friday afternoon, February 17th and the morning of February 18th up to sale time. Our sale day BBQ lunch will be served at 12:00 noon and the sale will begin at 1:00 pm. The sale will start with Simmental and SimAngus females, then Simbrah females, then the bulls.

Again, we greatly appreciate your interest in our cattle and welcome you to our ranch and sale. If you need further assistance in any way, please do not hesitate to contact us.

903-530-2371 Joe Prud'homme

903-235-9112 Tom Barker, Manager

joe@7pranch.com

tom@7pranch.com

www.7pranch.com

Sale catalog available electronically on our website.

View online catalog and videos of our sale offering at
www.cattleinmotion.com

Sale Date and Time

Saturday, February 18 - Lunch at 12:00 pm - Females sell at 1:00 pm.

Sale Location

7P Ranch, 10678 FM 757, Winona, TX 75792 Located 1.3 miles south of I-20 on FM 757, midway between Tyler and Longview at exit 571-B on I-20.

Accommodations in Tyler

Country Side Inn - 903-877-9227 (4.8 miles)

Days Inn & Suites by Wyndham - 903-705-4660 (11.7 miles)

La Quinta by Wyndham Tyler - 855-797-6733 (15 miles)

Holiday Inn Express & Suites Lindale - 903-882-3700 (16.5 miles)

Sale Day Phones

903-530-2371 - 903-235-9112

Sale Consultants

Warren Garrett 903-316-2889

Marty Ropp - Allied Genetic Resources 406-581-7835

Auctioneer

Mark Tillman 210-216-6754

Terms of Sale

Terms of sale are cash or check to be paid in full at the conclusion of the sale.
Sale terms and conditions enclosed.

Sale Conditions

Each animal will be sold to the highest bidder with the auctioneer settling any disputes as to bids. Each animal will become the property of the buyer as soon as sold. All persons attending the sale do so at their own risk. 7P Ranch, nor any person connected with the sale, assumes liability, legal or otherwise, for any accidents which may occur.

Created by:

ASA PUBLICATION, INC
One Genetics Way, Bozeman, MT 59718
Phone: 406-587-2778
www.simmental.org



Like us on facebook

Reference Sires

Name	ASA Number	Color	HPS	Breeds	Sire
3C MACHO M450 BZ	2184077	Black	Polled	PB SM	MEYER RANCH 734
5T MR R14	2301418		Polled	PB SM	CNS POWER SOURCE 070K
ANKONIAN CAESAR T004	2381915			PB SM	ANKONIAN RED CAESAR
ANKONIAN COLOSSAL S039	2357460		Polled	PB SM	CNS DREAM ON L186
B/R DESTINATION 727-928	2277061	Black	Polled	PB AN	B/R DESTINATION 727
BC CLASSIC 385-7	2534181	Black	Polled	PB AN	BC CLASSIC 443 6807 RT 2424
CCR BOULDER 1339A	2880390	Black	Polled	1/2 SM 1/2 AN	HOOVER DAM
CCR BREAKOUT F9K	2077697		Polled	PB SM	HC POWER DRIVE 88H
CCR GRAVITY 9064A	2725676	Black	Polled	3/4 SM 1/4 AN	S D S GRADUATE 006X
CCR PAY DIRT 2340C	3112013	Black	Polled	1/2 SM 1/2 AN	BASIN PAYWEIGHT 1682
CCR ROBUST 3123C	3026612	Black	Polled	5/8 SM 3/8 AN	GW ROBUST 605Z
CDI MAVERICK 335B	2853061	Red	Polled	PB SM	HOOK'S XPECTATION 36X
CONNELY COUNSELOR	2794902	Black	Polled	PB AN	CONNELY MENTOR 7374
DIKEMANS SURE BET	2294262	Black	Polled	PB SM	TJ 57J THE GAMBLER
EF COMPLEMENT 8088	2715206	Black	Polled	PB AN	BASIN FRANCHISE P142
ELLINGSON LEGACY M229	2171761	Black	Polled	PB SM	NICHOLS LEGACY G151
EMINENCE AVE13	3301906	Red	Polled	FB SM	VPFS BRANTZ 12B
EXAR UPSHOT 0562B	2665421	Black	Polled	PB AN	SITZ UPWARD 307R
GIBBS 0689X CRIMSON TIDE	2602503	Black	Polled	PB SM	MR NLC UPGRADE U8676
GIBBS 2594Z SM UPG P342	2723102	Black	Polled	PB SM	MR NLC UPGRADE U8676
GIBBS 3115A SM SUB 8082U	2845507	Black	Polled	PB SM	GW-WBF SUBSTANCE 820Y
GIBBS 9114G ESSENTIAL	3716905	Black	Polled	PB SM	GIBBS 7382E BROAD RANGE
GPAR ESSENTIAL	3288151	Black	Polled	3/4 SM 1/4 AN	TL BOTTOMLINE
GW LUCKY BOY 252U	2471391			3/4 SM 1/4 AN	GW LUCKY MAN 644N
GW LUCKY MAN 644N	2223338	Black	Polled	PB SM	GW LUCKY CHARM 665K
H A IMAGE MAKER 0415	2350004	Black	Polled	PB AN	HERO 6267 OF R R 2418
HILB ORACLE C033R	2993610	Black	Polled	PB SM	LLSF UPRISING Z925
HL GAME PLAN R42X	2558960	Black	Polled	PB SM	HL GRID BUSTER P51
HOOK'S BALTIC 17B	2854454	Black	Polled	PB SM	GW-WBF SUBSTANCE 820Y
HOOK'S BEACON 56B	2854180	Black	Polled	PB SM	HOOKS SHEAR FORCE 38K
HOOK'S BOUNTY 6B	2854458	Black	Polled	3/4 SM 1/4 AN	MCM TOP GRADE 018X
HOOK'S BOZEMAN 8B	2854480	Black	Polled	PB SM	GW-WBF SUBSTANCE 820Y
HOOK'S FREEDOM 45F	3403357	Black	Polled	PB SM	HOOK'S BEACON 56B
HOOK'S YELLOWSTONE 97Y	2612546	Black	Polled	PB SM	HOOKS TAURUS 24T
HSF CARDINAL 133G	3749672	Red	Polled	PB SM	IR IMPERIAL D948
JC MR NATIONAL 610Y	2616993	Black	Polled	1/2 SM 1/2 AN	GW PREDESTINED 701T
KBHR ALL AMERICAN G104	3618723	Red	Polled	PB SM	WS ALL ABOARD B80
KBHR HONOR H060	3789447	Black	Polled	PB SM	HOOK'S BEACON 56B
KESSLERS FRONTMAN R001	2571027	Black	Polled	PB AN	CONNELY FRONT PAGE 0228
KOCH LC MONTE 803U	2471172	Black	Polled	PB SM	GW LUCKY CHARM 665K
LITTLE CREEK DENNIS 490D	3228428	Red	Horned	FB SM	LITTLE CREEK XPRESS 840X
LITTLE CREEK FRANTZ	3601305	Red	Polled	FB SM	VPFS BRANTZ 12B
M4 GOLD STEEL C80	3000833	Black	Polled	PB SM	JM OL STEEL Y50
MC BLACK SULLIVAN 0181	2625700	Black	Polled	PB AN	CONNELY SULLIVAN 83A
MC UPWARD 0142	2641109	Black	Polled	PB AN	SITZ UPWARD 307R
MCKELLAR INVESTMENT 4109	3111564	Black	Polled	PB AN	SITZ INVESTMENT 660Z
MCKELLAR RIGHT ANSWER 5066	3111563	Black	Polled	PB AN	CONNELY RIGHT ANSWER 746
MCKELLAR STUNNER 8185	3768153	Black	Polled	PB AN	MUSGRAVE 316 STUNNER
MCKELLAR UPWARD 8416	3768151	Black	Polled	PB AN	SITZ UPWARD 307R
MCKELLAR VRD 5031	2515002		Polled	PB AN	VERMILION DATELINE 7078

Reference Sires

MCM TOP GRADE 018X	2540315	Black	Polled	3/4 SM 1/4 AN	MR NLC UPGRADE U8676
MF STRAIGHTFORWARD Y9	2587760	Black	Polled	PB SM	NICHOLS MANIFEST T79
MORGANS DIRECTION 111 9901	2331719	Black	Polled	PB AN	C A FUTURE DIRECTION 5321
MR 7P A300	2920347	Black	Polled	1/2 SM 1/2 AN	MC BLACK SULLIVAN 0181
MR 7P A385	2920327	Black	Polled	1/2 SM 1/2 AN	CONNELLY COUNSELOR
MR 7P B169	2970953	Black	Polled	1/2 SM 1/2 AN	EXAR UPSHOT 0562B
MR 7P B181	2971037	Red	Polled	PB SM	TRAXS RUSHMORE X103
MR 7P D290	3343664	Black	Polled	PB SM	HOOK'S BEACON 56B
MR 7P R580	2342925			PB SM	PVF-BF BF26 BLACK JOKER
MR 7P Z260	2747952	Black	Polled	PB SM	MCM TOP GRADE 018X
MR ISHEE DOUBLE UP 509	2973779	Black	Polled	3/4 SM 1/4 AN	MR ISHEE CATALYST
MR KALLION 1352	3314034	Grey	Horned	PB BR	MR MENDEL DE KALLION 436 ET
MR NLC ENTREPRENEUR 1227	2656649	Black	Polled	1/2 SM 1/2 AN	TNT TANKER U263
MR NLC SUPERIOR S6018	2372107	Black	Polled	PB SM	ELLINGSON LEGACY M229
MR SR HIGHLIFE G1609	3568376	Black	Polled	PB SM	KBHR HIGH ROAD E283
MYTTY IN FOCUS	2326312	Black	Polled	PB AN	S A F FOCUS OF E R
NLC BREAK FREE 72W	2522023	Black	Polled	PB SM	NLC STETSON 36S
NLC GEN TEN 82E	3317984	Black	Polled	PB SM	NLC PROGRESSIVE 40C
PA POWER TOOL 9108	2836218	Black	Polled	PB AN	G A R PREDESTINED
PERRY POWER DESIGN 715	2196039	Black	Polled	PB AN	B/R NEW DESIGN 036
PMS PRINCIPAL 301U	2489920			PB SM	CNS DREAM ON L186
POWELLS SWITCH BLADE	3780582	Black	Polled	PB SM	SWR BLACK WAGON
QUAKER HILL RAMPAGE 0A36	2915381	Black	Polled	PB AN	MCC DAYBREAK
RAINS BLK M717H	2153709		Polled	PB SM	RAINSBLACK BOLDSTOCK142F
RRJS STEEL FORCE 061U	2486699			1/2 SM 1/2 AN	SVF STEEL FORCE S701
SCE HOT PEPPER W972	2542343			PB SM	THSF FREEDOM 300N
SCE UPPER HAND 294E	3412895	Black	Polled	PB SM	CCR WIDE RANGE 9005A
SRS J914 PREFERRED BEEF	2050715	Black	Polled	PB SM	LRS PREFERRED STOCK 370C
SS GOLDMINE L42	2106737	Black	Polled	PB SM	WLE POWER STROKE
TAG BLACK 14A	2849157	Black	Polled	PB SM	DIKEMANS SURE BET
TJ GOLD 274G	3582577	Black	Polled	PB SM	HOOK'S EAGLE 6E
TJ GOLD STRIKE 506J	3909662	Black	Polled	3/4 SM 1/4 AN	TJ GOLD 274G
TJ HIGH BET 236X	2569624		Polled	1/2 SM 1/2 AN	DIKEMANS SURE BET
TJ HIGH PLAINS 986E	3288842	Black	Polled	PB SM	CCR COWBOY CUT 5048Z
TJ OMAHA 378A	2773822	Black	Polled	1/2 SM 1/2 AN	MR NLC UPGRADE U8676
TNT DUAL FOCUS T249	2421851	Black	Polled	1/2 SM 1/2 AN	MYTTY IN FOCUS
TNT E-Z-3 X360	2571661	Black	Polled	PB SM	MR NLC SUPERIOR S6018
TNT FINALE W241	2524763	Black	Polled	1/2 SM 1/2 AN	S A V FINAL ANSWER 0035
TRAXS RUSHMORE X103	2574812	Red	Polled	PB SM	THSF FREEDOM 300N
W/C RAPID FIRE 2101C	3041151	Black	Polled	1/2 SM 1/2 AN	REMINGTON LOCK N LOAD54U
W/C REST EASY 752G	3644912	Black	Polled	PB SM	MR SR 71 RIGHT NOW E1538
W/C UNITED 956Y	2614725	Black	Polled	1/2 SM 1/2 AN	TNT TUITION U238
WLE UNO MAS X549	2532016	Black	Polled	PB SM	CNS DREAM ON L186
WS BEEF MAKER R13	2289889		Polled	PB SM	HOOKS SHEAR FORCE 38K
WS LOADED GUNS J04W	2508945	Black	Polled	PB SM	TNT EVER READY R232
WS PRIME BEEF Z8	2675742	Red	Polled	PB SM	WS BEEF KING W107
WS SATURN F88S	2358968		Polled	PB SM	SVF/NJC BUILT RIGHT N48
WS SHERIFF F85S	2359429		Polled	PB SM	CNS DREAM ON L186
WS ZENITH Z55	2675747	Red	Polled	PB SM	GW RED COAT 099TS
XTS PISTOL PETE	2377802		Polled	PB SM	CIRCLET ANTOINETTES STAR

Bulls

1

MR 7P H278

Double Black Double Polled 5/8 SM 1/4 AN 1/8 CS
 ASA# 3901337 H278 BD: 10/30/20

HOOK'S BEACON 56B MC UPWARD 0142
 Sire: MR 7P D290 Dam: MISS 7P B343
 MISS 7P X214 MISS 7P U275

Trait	CE	BW	WW	YW	MCE	Milk	MWW	Stay	CW	YG	Marb	Fat	REA	API	TI
EPD	11.2	-0.3	67.1	98.7	6.1	21.7	55.2	16.2	20.4	-.37	.27	-.071	.75	126	72

2

MR 7P H270

Double Black Double Polled PB SM
 ASA# 3901318 H270 BD: 10/27/20

GW-WBF SUBSTANCE 820Y MR NLC SUPERIOR S6018
 Sire: HOOK'S BALTIC 17B Dam: MISS7PW251
 HOOK'S SARITA 92Y MISS 7P G476

Trait	CE	BW	WW	YW	MCE	Milk	MWW	Stay	CW	YG	Marb	Fat	REA	API	TI
EPD	13.5	-0.9	62.1	97	7.5	8.8	39.8	13.6	27	-.33	.10	-.064	.76	126	70

Good calving ease and birth weight EPDs.

3

MR 7P J29

Double Black Double Polled 3/4 SM 1/4 AN
 ASA# 3982957 J29 BD: 1/22/21

HOOK'S BEACON 56B PA POWER TOOL 9108
 Sire: MR 7P D290 Dam: MISS 7P C109
 MISS 7P X214 MISS 7P A194

Trait	CE	BW	WW	YW	MCE	Milk	MWW	Stay	CW	YG	Marb	Fat	REA	API	TI
EPD	10.6	1	73	111.8	5.1	25.3	61.8	16.8	30.5	-.37	.37	-.067	.90	133	77

4

MR 7P J32

Double Black Double Polled 1/2 SM 1/2 AN
 ASA# 3982956 J32 BD: 1/25/21

SITZ UPWARD 307R MR 7P R580
 Sire: MCKELLAR UPWARD 8416 Dam: MISS 7P W108
 MC ELAINE 1118 MISS 7P M283

Trait	CE	BW	WW	YW	MCE	Milk	MWW	Stay	CW	YG	Marb	Fat	REA	API	TI
EPD	7.7	2	72.1	112.8	4.2	25.6	61.6	17.2	36.1	-.19	.16	-.039	.64	116	69



Lot 5

5

MR 7P J108

Black Double Polled 3/4 SM 1/4 AN
 ASA# 3982903 J108 BD: 3/13/21

VPFS BRANTZ 12B MC BLACK SULLIVAN 0181
 Sire: LITTLE CREEK FRANTZ Dam: MISS 7P B105
 LITTLE CREEK BRIELE 551B MISS 7P Y300

Trait	CE	BW	WW	YW	MCE	Milk	MWW	Stay	CW	YG	Marb	Fat	REA	API	TI
EPD	11.3	1.4	70.4	106.5	7	32.2	67.4	14	29.4	-.36	.03	-.076	.78	108	68

6

MR 7P J137

Red Polled 3/4 SM 1/4 AN
 ASA# 3982941 J137 BD: 3/31/21

LITTLE CREEK XPRESS 840X H A IMAGE MAKER 0415
 Sire: LITTLE CREEK DENNIS 490D Dam: MISS 7P B147
 LITTLE CREEK ASPEN 151A MISS 7P Z176

Trait	CE	BW	WW	YW	MCE	Milk	MWW	Stay	CW	YG	Marb	Fat	REA	API	TI
EPD	6	5.3	99.4	150.1	4.8	34.6	84.2	17	44.8	-.36	.06	-.093	.86	113	80

Top 2% weaning weight EPD, Top 5% yearling weight EPD.

7

MR 7P H191

Double Black Double Polled PB SM
 ASA# 3901287 H191 BD: 9/16/20

NLC PROGRESSIVE 40C SCE HOT PEPPER W972
 Sire: NLC GEN TEN 82E Dam: MISS 7P A312
 NLC A109 AMBER MISS 7P Y180

Trait	CE	BW	WW	YW	MCE	Milk	MWW	Stay	CW	YG	Marb	Fat	REA	API	TI
EPD	9.5	1.5	67.7	96.7	5.4	27.9	61.7	18.7	18.4	-.31	.24	-.056	.66	134	74



MR 7P J133

Red Polled 3/4 SM 1/4 AN
ASA# 3982837 J133 BD: 3/29/21

LITTLE CREEK XPRESS 840X KESSLERS FRONTMAN R001
Sire: LITTLE CREEK DENNIS 490D Dam: MISS 7P A207
LITTLE CREEK ASPEN 151A MISS 7P W70

Trait	CE	BW	WW	YW	MCE	Milk	MWW	Stay	CW	YG	Marb	Fat	REA	API	TI
EPD	8.7	2.4	75.9	115.2	5.9	34.4	72.3	15.7	30.9	-0.40	-0.04	-0.093	.81	104	68



MR 7P H315

Black Polled 3/4 SM 1/4 AN
ASA# 3901210 H315 BD: 11/15/20

LITTLE CREEK XPRESS 840X RRJS STEEL FORCE 061U
Sire: LITTLE CREEK DENNIS 490D Dam: MISS 7P C269
LITTLE CREEK ASPEN 151A MISS 7P Y143

Trait	CE	BW	WW	YW	MCE	Milk	MWW	Stay	CW	YG	Marb	Fat	REA	API	TI
EPD	9.4	1.8	72.1	108.4	6.4	29.5	65.5	16.4	31.7	-0.39	.03	-0.094	.78	110	68



MR 7P J126

Red Double Polled 3/4 SM 1/4 CS
ASA# 3982897 J126 BD: 3/27/21

HOOK'S BEACON 56B CDI MAVERICK 335B
Sire: MR 7P D290 Dam: MISS 7P D145
MISS 7P X214 MISS 7P W137

Trait	CE	BW	WW	YW	MCE	Milk	MWW	Stay	CW	YG	Marb	Fat	REA	API	TI
EPD	8.4	2	72.4	107.8	4.6	26.6	62.7	17.3	25.6	-0.51	.18	-0.095	1.07	130	76



Lot 10



MR 7P J115

Red Double Polled PB SM
ASA# 3982854 J115 BD: 3/19/21

VPFS BRANTZ 12B MR 7P B181
Sire: LITTLE CREEK FRANTZ Dam: MISS 7P F457
LITTLE CREEK BRIELE 551B MISS 7P D152

Trait	CE	BW	WW	YW	MCE	Milk	MWW	Stay	CW	YG	Marb	Fat	REA	API	TI
EPD	10.2	1.8	75.2	111	6.1	32	69.6	14.9	26.9	-0.57	-0.10	-0.121	1.05	114	72



MR 7P J136

Red Polled PB SM
ASA# 3982933 J136 BD: 3/30/21

LITTLE CREEK XPRESS 840X GW LUCKY BOY 252U
Sire: LITTLE CREEK DENNIS 490D Dam: MISS 7P A379
LITTLE CREEK ASPEN 151A MISS 7P Y360

Trait	CE	BW	WW	YW	MCE	Milk	MWW	Stay	CW	YG	Marb	Fat	REA	API	TI
EPD	11.1	0.5	75.1	112.5	8.1	31.5	69	17.3	33.2	-0.48	-0.01	-0.113	.91	127	75



MR 7P J149

Double Black Double Polled 1/2 AN 3/8 CS 1/8 HH
ASA# (3982889) J149 BD: 4/19/21

SITZ INVESTMENT 660Z MR 7P R580
Sire: MCKELLAR INVESTMENT 4109 Dam: MISS 7P X102
JMC JEENA BRIT 0403 8420 MISS 7P H114

Trait	CE	BW	WW	YW	MCE	Milk	MWW	Stay	CW	YG	Marb	Fat	REA	API	TI
EPD	7.6	1.5	65.9	101.3	6.5	19.8	52.7	12.8	33.1	-0.05	.06	-0.018	.33	93	60



MR 7P J219

Black Polled/Scurred 1/2 BR 1/4 AN 1/4 CS
ASA# (4050170) J219 BD: 9/21/21

MR MENDEL DE KALLION 436 ET KESSLERS FRONTMAN R001
Sire: MR KALLION 1352 Dam: MISS 7P A249
MISS KALLION 1731 MISS 7P W140

Trait	CE	BW	WW	YW	MCE	Milk	MWW	Stay	CW	YG	Marb	Fat	REA	API	TI
EPD	10.1	2.1	90.4	146.1	5	21.1	66.3	2.4	38.1	-0.23	-0.09	-0.059	.62	79	72

Top 10% weaning, yearling and average daily gain EPDs.



Lot 15

15

MR 7P J218

Black Polled/Scurred 1/2 SM 1/2 BR
 ASA# 4050089 J218 BD: 9/19/21

MR MENDEL DE KALLION 436 ET GIBBS 3115A SM SUB 8082U
 Sire: MR KALLION 1352 Dam: MISS 7P E392
 MISS KALLION 1731 MISS 7P B218

Trait	CE	BW	WW	YW	MCE	Milk	MWW	Stay	CW	YG	Marb	Fat	REA	API	TI
EPD	12.2	0.3	84.4	134.6	6.3	16.8	59	3.6	31.9	-.39	-.08	-.090	.79	91	74

Top 10% calving ease. Top 1% weaning and yearling EPDs. Top 35% API and 2% TI.



16

MR 7P J228

Black Double Polled 3/4 SM 1/4 AN
 ASA# 4050055 J228 BD: 10/2/21

WS ALL ABOARD B80 MORGANS DIRECTION 111 9901
 Sire: KBHR ALL AMERICAN G104 Dam: MISS7PW205
 KBHR C078 MISS 7P R742

Trait	CE	BW	WW	YW	MCE	Milk	MWW	Stay	CW	YG	Marb	Fat	REA	API	TI
EPD	10	1.6	82.9	126.2	4.8	29.6	71	11.9	37.3	-.40	.34	-.077	1.01	123	82



Lot 17

17

MR 7P J169

Double Black Double Polled 3/4 SM 1/4 AN
 ASA# 4050137 J169 BD: 9/4/21

HOOK'S BEACON 56B TNT FINALE W241
 Sire: HOOK'S FREEDOM 45F Dam: MISS 7P A281
 HOOK'S YUMA 49Y MISS7PW244

Trait	CE	BW	WW	YW	MCE	Milk	MWW	Stay	CW	YG	Marb	Fat	REA	API	TI
EPD	13.3	-0.6	79.9	126.3	8.4	24.8	64.7	17.3	29.1	-.21	.44	-.021	.74	147	85

18

MR 7P J173

Red Double Polled PB SM
 ASA# 4050084 J173 BD: 9/5/21

WS ALL ABOARD B80 WS ZENITH Z55
 Sire: KBHR ALL AMERICAN G104 Dam: MISS 7P F173
 KBHR C078 MISS 7P D131

Trait	CE	BW	WW	YW	MCE	Milk	MWW	Stay	CW	YG	Marb	Fat	REA	API	TI
EPD	8.3	2.8	94.9	145.3	4.8	21.4	68.8	14.6	39	-.52	.28	-.103	1.20	138	91

Top 10% weaning, yearling and average daily gain EPDs.

19

MR 7P J194

Double Black Double Polled PB SM
 ASA# 4050056 J194 BD: 9/10/21

HOOK'S BEACON 56B KOCH LC MONTE 803U
 Sire: HOOK'S FREEDOM 45F Dam: MISS 7P B269
 HOOK'S YUMA 49Y MISS 7P Z312

Trait	CE	BW	WW	YW	MCE	Milk	MWW	Stay	CW	YG	Marb	Fat	REA	API	TI
EPD	10.1	1.7	96.5	152	6.9	29	77.2	16.6	47	-.34	.30	-.060	1.07	148	94

Top 4% weaning, yearling and average daily gain EPDs. Top 25% API and 10% TI.

20**MR 7P J214**

Double Black	Double Polled	PB SM
ASA# 4050007	J214	BD: 9/17/21

HOOK'S BEACON 56B MR NLC SUPERIOR S6018
 Sire: HOOK'S FREEDOM 45F Dam: MISS 7P X10
 HOOK'S YUMA 49Y MISS 7P N25

Trait	CE	BW	WW	YW	MCE	Milk	MWW	Stay	CW	YG	Marb	Fat	REA	API	TI
EPD	11	0.2	76.2	119.8	7.2	24.6	62.7	18.3	32.1	-.38	.21	-.060	1.00	142	81

21**MR 7P J223**

Double Black	Double Polled	PB SM
ASA# 4050123	J223	BD: 9/26/21

HOOK'S BEACON 56B SCE HOT PEPPER W972
 Sire: HOOK'S FREEDOM 45F Dam: MISS 7P A312
 HOOK'S YUMA 49Y MISS 7P Y180

Trait	CE	BW	WW	YW	MCE	Milk	MWW	Stay	CW	YG	Marb	Fat	REA	API	TI
EPD	12	0	84.6	133	8.8	28.3	70.6	18.7	30.9	-.33	.35	-.049	.93	155	90

A balanced bull, top 25% in birth weight through yearling weight. Top 15% API and TI.

22**MR 7P J241**

Double Black	Double Polled	3/4 SM 1/4 AN
ASA# 4050111	J241	BD: 10/7/21

HOOK'S BEACON 56B W/C UNITED 956Y
 Sire: HOOK'S FREEDOM 45F Dam: MISS 7P B221
 HOOK'S YUMA 49Y MISS7PW178

Trait	CE	BW	WW	YW	MCE	Milk	MWW	Stay	CW	YG	Marb	Fat	REA	API	TI
EPD	13.5	-0.7	88.1	142.6	9.3	27.9	71.9	16.4	40.4	-.20	.40	-.026	.81	147	90

Good weaning, yearling and average daily gain. Top 25% API and 15% TI.



Lot 22

23**MR 7P J195**

Double Black	Double Polled	3/4 SM 1/4 AN
ASA# 4050159	J195	BD: 9/11/21

HOOK'S BEACON 56B EF COMPLEMENT 8088
 Sire: HOOK'S FREEDOM 45F Dam: MISS 7P D113
 HOOK'S YUMA 49Y MISS 7P B215

Trait	CE	BW	WW	YW	MCE	Milk	MWW	Stay	CW	YG	Marb	Fat	REA	API	TI
EPD	12.1	1	88.8	143.6	8.6	28.7	73.1	18.2	41.2	-.21	.52	-.022	.90	153	91

Good growth EPD's.

24**MR 7P J176**

Double Black	Double Polled 5/8 SM 5/16 AN 1/16 CS
ASA# 4049997	J176

HOOK'S BEACON 56B MR 7P B169
 Sire: HOOK'S FREEDOM 45F Dam: MISS 7P G97
 HOOK'S YUMA 49Y MISS 7P B323

Trait	CE	BW	WW	YW	MCE	Milk	MWW	Stay	CW	YG	Marb	Fat	REA	API	TI
EPD	12.2	1.6	89.2	144.8	8.8	29	73.5	17.7	41.7	-.23	.45	-.025	.94	147	89

25**MR 7P J165**

Double Black	Polled	PB SM
ASA# 4050091	J165	BD: 9/2/21

HOOK'S BEACON 56B MR 7P R580
 Sire: HOOK'S FREEDOM 45F Dam: MISS 7P A62
 HOOK'S YUMA 49Y MISS 7P S34

Trait	CE	BW	WW	YW	MCE	Milk	MWW	Stay	CW	YG	Marb	Fat	REA	API	TI
EPD	9.3	1	68.7	108.6	6.4	28.2	62.5	18.6	27	-.37	.18	-.065	.89	134	75

26**MR 7P J343**

Red	Double Polled	PB SM
ASA# 4050027	J343	BD: 12/4/21

VPFS BRANTZ 12B MR 7P B181
 Sire: EMINENCE AVE13 Dam: MISS 7P E332
 BOURBON AFB1 MISS 7P A33

Trait	CE	BW	WW	YW	MCE	Milk	MWW	Stay	CW	YG	Marb	Fat	REA	API	TI
EPD	12.7	0.3	66.9	95	8.5	30.1	63.5	15.4	21	-.53	-.11	-.118	.88	116	68



27

MR 7P J213

Double Black Double Polled 3/4 SM 1/4 AN
 ASA# 4050064 J213 BD: 9/15/21

HOOK'S BEACON 56B TNT DUAL FOCUS T249
 Sire: HOOK'S FREEDOM 45F Dam: MISS 7P A239
 HOOK'S YUMA 49Y MISS 7P U229

Trait	CE	BW	WW	YW	MCE	Milk	MWW	Stay	CW	YG	Marb	Fat	REA	API	TI
EPD	10.9	1.1	80.9	130.4	5.8	26.1	66.5	17.3	30.9	-.21	.45	-.024	.74	142	84

28

MR 7P J230

Double Black Double Polled 3/4 SM 1/4 AN
 ASA# 4050100 J230 BD: 10/3/21

HOOK'S BEACON 56B TJ OMAHA 378A
 Sire: HOOK'S FREEDOM 45F Dam: MISS 7P F201
 HOOK'S YUMA 49Y MISS 7P B280

Trait	CE	BW	WW	YW	MCE	Milk	MWW	Stay	CW	YG	Marb	Fat	REA	API	TI
EPD	11.5	0.9	96.8	155.6	9.4	30	78.4	16.9	50.2	-.21	.45	-.028	.98	149	94

Very good growth numbers. Top 3% weaning and yearling EPD's.

29

MR 7P J250

Double Black Double Polled 3/4 SM 1/4 AN
 ASA# 4050141 J250 BD: 10/10/21

HOOK'S BEACON 56B MC BLACK SULLIVAN 0181
 Sire: HOOK'S FREEDOM 45F Dam: MISS 7P C340
 HOOK'S YUMA 49Y MISS 7P Z154

Trait	CE	BW	WW	YW	MCE	Milk	MWW	Stay	CW	YG	Marb	Fat	REA	API	TI
EPD	12.8	1.1	91.6	150.7	8.5	28.3	74.1	17.3	49	-.21	.45	-.028	.95	150	91

Another good growth bull.

30

MR 7P J258

Black Polled 1/2 SM 1/2 BR
 ASA# 4050044 J258 BD: 10/15/21

MR MENDEL DE KALLION 436 ET MR ISHEE DOUBLE UP 509
 Sire: MR KALLION 1352 Dam: MISS 7P E273
 MISS KALLION 1731 MISS 7P U260

Trait	CE	BW	WW	YW	MCE	Milk	MWW	Stay	CW	YG	Marb	Fat	REA	API	TI
EPD	8.1	2.7	75.6	122.3	3.1	15.8	53.6	4.5	23.5	-.39	-.14	-.092	.68	76	63

31

MR 7P J178

Red Double Polled PB SM
 ASA# 4050124 J178 BD: 9/7/21

WS ALL ABOARD B80 WS ZENITH Z55
 Sire: KBHR ALL AMERICAN G104 Dam: MISS 7P G169
 KBHR C078 MISS7PW205

Trait	CE	BW	WW	YW	MCE	Milk	MWW	Stay	CW	YG	Marb	Fat	REA	API	TI
EPD	8.3	3.6	86.6	134.4	4.2	21.3	64.6	13.4	35.6	-.47	.31	-.094	1.09	133	85



Lot 32

32

MR 7P J193

Double Black Double Polled 3/4 SM 1/4 AN
 ASA# 4050127 J193 BD: 9/10/21

HOOK'S BEACON 56B CCR BREAKOUT F9K
 Sire: HOOK'S FREEDOM 45F Dam: MISS 7P W115
 HOOK'S YUMA 49Y GC460_

Trait	CE	BW	WW	YW	MCE	Milk	MWW	Stay	CW	YG	Marb	Fat	REA	API	TI
EPD	10.2	0	65.6	108	4.4	23.1	55.9	13.7	24.5	-.28	.25	-.041	.74	119	71



MR 7P J266

Red Double Polled PB SM
ASA# 4050169 J266 BD: 10/20/21

WS ALL ABOARD B80 WS PRIME BEEF Z8
Sire: KBHR ALL AMERICAN G104 Dam: MISS 7P F350
KBHR C078 MISS 7P A319

Trait	CE	BW	WW	YW	MCE	Milk	MWW	Stay	CW	YG	Marb	Fat	REA	API	TI
EPD	10.6	2.3	95.9	144.9	5.8	22.4	70.3	14.1	37.4	-.53	.33	-.102	1.22	144	94

Good growth bull out of AI sire. Top 5% weaning and top 10% yearling EPDs.



MR 7P J183

Double Black Double Polled PB SM
ASA# 4050132 J183 BD: 9/8/21

HOOK'S BEACON 56B HOOK'S BOUNTY 6B
Sire: HOOK'S FREEDOM 45F Dam: MISS 7P D219
HOOK'S YUMA 49Y MISS 7P X290

Trait	CE	BW	WW	YW	MCE	Milk	MWW	Stay	CW	YG	Marb	Fat	REA	API	TI
EPD	11.9	0.4	77.6	126.3	7.9	28.1	66.9	20.9	33.2	-.38	.34	-.066	.97	157	86



MR 7P J239

Double Black Double Polled 3/4 SM 1/4 AN
ASA# 4050162 J239 BD: 10/7/21

HOOK'S BEACON 56B QUAKER HILL RAMPAGE 0A36
Sire: HOOK'S FREEDOM 45F Dam: MISS 7P E255
HOOK'S YUMA 49Y MR 7P C194

Trait	CE	BW	WW	YW	MCE	Milk	MWW	Stay	CW	YG	Marb	Fat	REA	API	TI
EPD	13.6	-0.3	90.2	146.4	8.8	23.6	68.7	17.4	47.5	-.31	.44	-.038	1.15	152	92



MR 7P J243

Double Black Double Polled PB SM
ASA# 4049998 J243 BD: 10/8/21

HOOK'S BEACON 56B HOOK'S BALTIC 17B
Sire: HOOK'S FREEDOM 45F Dam: MISS 7P G93
HOOK'S YUMA 49Y MISS 7P Y298

Trait	CE	BW	WW	YW	MCE	Milk	MWW	Stay	CW	YG	Marb	Fat	REA	API	TI
EPD	10.3	2	90	143.8	6.4	21.1	66.1	17.1	35.4	-.32	.40	-.047	.97	152	91



MR 7P J301

Double Black Double Polled 5/8 SM 1/4 AN 1/8 CS
ASA# 4049993 J301 BD: 11/9/21

HOOK'S BEACON 56B MC UPWARD 0142
Sire: HOOK'S FREEDOM 45F Dam: MISS 7P B343
HOOK'S YUMA 49Y MISS 7P U275

Trait	CE	BW	WW	YW	MCE	Milk	MWW	Stay	CW	YG	Marb	Fat	REA	API	TI
EPD	11	1.3	81.2	131.5	6.9	24.2	64.8	16.3	32.5	-.26	.39	-.040	.79	137	82



MR 7P J185

Double Black Double Polled 3/4 SM 1/4 AN
ASA# 4050177 J185 BD: 9/8/21

HOOK'S EAGLE 6E MR NLC ENTREPRENEUR 1227
Sire: TJ GOLD 274G Dam: MISS 7P F181
TJ 12C MISS 7P D216

Trait	CE	BW	WW	YW	MCE	Milk	MWW	Stay	CW	YG	Marb	Fat	REA	API	TI
EPD	11.2	1.3	79.3	124.7	7	22	61.6	18.1	30.7	-.23	.46	-.037	.72	143	82



MR 7P J205

Double Black Double Polled 3/4 SM 1/4 AN
ASA# 4050115 J205 BD: 9/14/21

HOOK'S BEACON 56B EF COMPLEMENT 8088
Sire: HOOK'S FREEDOM 45F Dam: MISS 7P D237
HOOK'S YUMA 49Y MISS 7P Y260

Trait	CE	BW	WW	YW	MCE	Milk	MWW	Stay	CW	YG	Marb	Fat	REA	API	TI
EPD	13.6	-0.6	80.4	130.5	10.1	29.2	69.4	18.8	37.2	-.19	.45	-.024	.76	152	86



MR 7P J340

Double Black Double Polled 3/4 SM 1/4 AN
ASA# 4050039 J340 BD: 11/30/21

HOOK'S BEACON 56B TNT DUAL FOCUS T249
Sire: MR 7P D290 Dam: MISS 7P B145
MISS 7P X214 MISS 7P Y148

Trait	CE	BW	WW	YW	MCE	Milk	MWW	Stay	CW	YG	Marb	Fat	REA	API	TI
EPD	9.3	1.4	78.8	116.7	4.7	26.7	66.1	18	28.8	-.33	.35	-.060	.80	133	79

41**MR 7P J212**

Black Double Polled PB SM
 ASA# 4050126 J212 BD: 9/15/21

HOOK'S BEACON 56B HOOK'S YELLOWSTONE 97Y
 Sire: HOOK'S FREEDOM 45F Dam: MISS 7P C143
 HOOK'S YUMA 49Y MISS7PW251

Trait	CE	BW	WW	YW	MCE	Milk	MWW	Stay	CW	YG	Marb	Fat	REA	API	TI
EPD	12.1	0.1	80.1	126	7.9	23.6	63.6	16.1	36.8	-.33	.32	-.054	.97	146	86

42**MR 7P J201**

Double Black Double Polled PB SM
 ASA# 4050154 J201 BD: 9/12/21

HOOK'S BEACON 56B TRAXS RUSHMORE X103
 Sire: HOOK'S FREEDOM 45F Dam: MISS 7P A319
 HOOK'S YUMA 49Y MISS 7P Y257

Trait	CE	BW	WW	YW	MCE	Milk	MWW	Stay	CW	YG	Marb	Fat	REA	API	TI
EPD	11.9	0.5	78.1	126.7	8	22.2	61.2	18.9	30.5	-.39	.33	-.064	.98	152	85

43**MR 7P J313**

Red Double Polled PB SM
 ASA# 4050010 J313 BD: 11/15/21

WS ALL ABOARD B80 WS ZENITH Z55
 Sire: KBHR ALL AMERICAN G104 Dam: MISS 7P D298
 KBHR C078 MR 7P A303

Trait	CE	BW	WW	YW	MCE	Milk	MWW	Stay	CW	YG	Marb	Fat	REA	API	TI
EPD	8.9	2.8	92.3	141.7	3.9	20.9	67	13.9	37.9	-.56	.23	-.116	1.21	134	88

44**MR 7P J166**

Double Black Double Polled 3/4 SM 1/4 AN
 ASA# 4050021 J166 BD: 9/2/21

HOOK'S BEACON 56B MR NLC ENTREPRENEUR 1227
 Sire: HOOK'S FREEDOM 45F Dam: MISS 7P E209
 HOOK'S YUMA 49Y MISS 7P A219

Trait	CE	BW	WW	YW	MCE	Milk	MWW	Stay	CW	YG	Marb	Fat	REA	API	TI
EPD	8	2.8	79.6	124.7	6.1	27.7	67.4	19.3	28.2	-.25	.39	-.031	.77	135	79

45**MR 7P J282**

Double Black Double Polled PB SM
 ASA# 4050041 J282 BD: 10/29/21

HOOK'S BEACON 56B KOCH LC MONTE 803U
 Sire: HOOK'S FREEDOM 45F Dam: MISS 7P B148
 HOOK'S YUMA 49Y MISS 7P Y159

Trait	CE	BW	WW	YW	MCE	Milk	MWW	Stay	CW	YG	Marb	Fat	REA	API	TI
EPD	9.5	2.1	87.9	139.8	6.3	27.8	71.7	18.6	36	-.37	.36	-.065	1.00	150	90

46**MR 7P J288**

Black Double Polled PB SM
 ASA# 4050046 J288 BD: 10/30/21

VPFS BRANTZ 12B TNT E-Z-3 X360
 Sire: EMINENCE AVE13 Dam: MISS 7P Z164
 BOURBON AFB1 MISS 7P T143

Trait	CE	BW	WW	YW	MCE	Milk	MWW	Stay	CW	YG	Marb	Fat	REA	API	TI
EPD	13	0.1	64.7	90.5	6.7	32.3	64.6	17	17.6	-.55	-.08	-.118	.89	120	68



Simmental and SimAngus Females

47

MISS 7P G217

Double Black Double Polled 3/4 SM 1/4 AN
 ASA# 3613028 G217 BD: 9/22/19

GW-WBF SUBSTANCE 820Y QUAKER HILL RAMPAGE 0A36
Sire: HOOK'S BALTIC 17B **Dam:** MISS 7P E255
 HOOK'S SARITA 92Y MR 7P C194

Trait	CE	BW	WW	YW	MCE	Milk	MWW	Stay	CW	YG	Marb	Fat	REA	API	TI
EPD	12.9	1.1	80.8	132.4	7.1	6.6	47	15.3	41.8	-.32	.28	-.054	1.00	133	79

Lot 47A, K277, black heifer calf, DOB 10/23/22, 59 lbs., out of the AI sire TJ GOLD 274G.

48

MISS 7P G328

Double Black Double Polled 1/2 SM 1/2 AN
 ASA# 3746414 G328 BD: 11/9/19

EXAR UPSHOT 0562B JC MR NATIONAL 610Y
Sire: MR 7P B169 **Dam:** MISS 7P C265
 MISS 7P U270 MISS 7P U193

Trait	CE	BW	WW	YW	MCE	Milk	MWW	Stay	CW	YG	Marb	Fat	REA	API	TI
EPD	12	1.6	66.4	109.1	8.4	25.9	59.1	18.7	31.6	-.12	.43	-.027	.45	138	74

Bred AI on 5/28/22 to a black PB SM sire GIBBS 9114G ESSENTIAL. PE to our black PB SM herd sire MR 7P D290 from 2/11/22 to 8/9/22. Due to calve in March 2023 to the herd sire.

49

ABS MISS H14

Black Polled 3/8 SM 1/2 CS 1/8 AN
 ASA# 3859191 H14 BD: 1/21/20

GW ROBUST 605Z WS SHERIFF F85S
Sire: CCR ROBUST 3123C **Dam:** W14
 CCR MS IN FORCE 3123A ABS MISS GUS 14N

Trait	CE	BW	WW	YW	MCE	Milk	MWW	Stay	CW	YG	Marb	Fat	REA	API	TI
EPD	9.1	1.7	70	101.3	4.2	23.6	58.6	16.1	26.2	-.44	.15	-.094	.85	114	69

Lot 49A, heifer calf, out of the AI sire WLE UNO MAS X549.

50

ABS MISS 853H

Black Polled 3/8 SM 3/8 CS 1/4 AN
 ASA# 3961655 853H BD: 2/11/20

GW ROBUST 605Z WS SATURN F88S
Sire: CCR ROBUST 3123C **Dam:** 853U
 CCR MS IN FORCE 3123A ABS MISS 600U 853H

Trait	CE	BW	WW	YW	MCE	Milk	MWW	Stay	CW	YG	Marb	Fat	REA	API	TI
EPD	10.1	0.7	65.1	98.2	4.6	24.1	56.6	15	27.4	-.35	.20	-.074	.77	116	68

Bred AI on 5/27/22 to WLE UNO MAS X549. Due to calve in March 2023.

51

MISS 7P H90

Double Black Double Polled 1/2 SM 1/2 AN
 ASA# 3747214 H90 BD: 2/19/20

CONNELLY RIGHT ANSWER 746 ANKONIAN CAESAR T004
Sire: MCKELLAR RIGHT ANSWER 5066 **Dam:** MISS 7P Z380
 JMC QUEEN MICA 7442 4510 MISS 7P T218

Trait	CE	BW	WW	YW	MCE	Milk	MWW	Stay	CW	YG	Marb	Fat	REA	API	TI
EPD	10.3	1.5	82.4	128.5	7.3	23	64.2	16	39	-.18	.22	-.040	.63	125	78

Bred AI on 5/14/22 to a black PB SM sire GIBBS 9114G ESSENTIAL. PE to our black PB SM herd sire MR 7P D290 from 5/23/22 to 8/9/22. Due to calve in February 2023 to the AI sire.



Lot 51

52

MISS 7P G167

Double Black Double Polled 3/4 SM 1/4 AN
 ASA# 3746418 G167 BD: 9/7/19

NLC PROGRESSIVE 40C RRJS STEEL FORCE 061U
Sire: NLC GEN TEN 82E **Dam:** MISS 7P C332
 NLC A109 AMBER MISS 7P A289

Trait	CE	BW	WW	YW	MCE	Milk	MWW	Stay	CW	YG	Marb	Fat	REA	API	TI
EPD	11.6	.2	60.9	90.6	4.9	25.2	55.6	15.4	25.7	-.22	.24	-.036	.63	119	67

Bred AI on 1/28/22 to a black PB SM sire TJ GOLD 274G. PE to our black PB SM herd sire MR 7P D290 from 2/8/22 to 8/9/22. Due to calve in March 2023 to the herd sire.

53

MISS 7P H180

Double Black Double Polled 3/4 SM 1/4 AN
 ASA# 3901339 H180 BD: 9/13/20

HOOKS SHEAR FORCE 38K MR NLC ENTREPRENEUR 1227
Sire: HOOK'S BEACON 56B **Dam:** MISS 7P F181
 HOOKS ZAFIRAH 41Z MISS 7P D216

Trait	CE	BW	WW	YW	MCE	Milk	MWW	Stay	CW	YG	Marb	Fat	REA	API	TI
EPD	10.7	2.5	85.4	131.4	8.7	23.8	66.4	18.7	39.1	-.31	.57	-.027	1.14	150	88

Lot 53A, K282, black heifer calf, DOB 10/31/22, 69 lbs., out of the AI sire TJ GOLD 274G.



MISS 7P J1

Black Double Polled PB SM
ASA# 3982968 J1 BD: 1/1/21

VPFS BRANTZ 12B NLC BREAK FREE 72W
Sire: LITTLE CREEK FRANTZ Dam: MR 7P C194
LITTLE CREEK BRIELE 551B MISS 7P Z248

Trait	CE	BW	WW	YW	MCE	Milk	MWW	Stay	CW	YG	Marb	Fat	REA	API	TI
EPD	9.3	2.8	73	112.3	5.1	27.5	63.9	15.1	26.6	-.53	-.06	-.112	1.02	113	70

Bred AI on 4/8/22 to a black PB SM sire KBHR HONOR H060. PE to our PB Angus herd sire MCKELLAR RESOURCE 8109 from 5/20/22 to 8/12/22. Due to calve in March 2023 to the herd sire.



MISS 7P H237

Double Black Double Polled 5/8 SM 1/4 AN 1/8 CS
ASA# 3901245 H237 BD: 10/11/20

CCR COWBOY CUT 5048Z CCR BOULDER 1339A
Sire: TJ HIGH PLAINS 986E Dam: MISS 7P E279
TJ MS 38W MISS 7P C121

Trait	CE	BW	WW	YW	MCE	Milk	MWW	Stay	CW	YG	Marb	Fat	REA	API	TI
EPD	17.1	-3.2	71.1	109.5	9.3	26.9	62.4	14.5	32.2	-.27	.39	-.047	.76	144	82

Bred AI on 3/4/22 to a black PB SM sire TJ GOLD 274G. PE to our black PB SM herd sire POWELLS SWITCH BLADE from 6/2/22 to 6/17/22, then to our red FB SM herd sire LITTLE CREEK FRANTZ from 6/18/22 to 8/10/22. Due to calve in April 2023 to LITTLE CREEK FRANTZ.



MISS 7P H259

Double Black Double Polled PB SM
ASA# 3901335 H259 BD: 10/24/20

GW-WBF SUBSTANCE 820Y MR NLC SUPERIOR S6018
Sire: HOOK'S BALTIC 17B Dam: MISS 7P X197
HOOK'S SARITA 92Y MISS 7P G476

Trait	CE	BW	WW	YW	MCE	Milk	MWW	Stay	CW	YG	Marb	Fat	REA	API	TI
EPD	9	3	77.9	118.6	4.8	13.5	52.4	13.9	31.9	-.33	.10	-.064	.83	119	74

Lot 56A, K339, black heifer calf, DOB 12/6/22, 79 lbs., out of our herd sire MR 7P D290.



MISS 7P H275

Red Double Polled PB SM
ASA# 3901371 H275 BD: 10/29/20

HOOK'S XPECTION 36X MR 7P B181
Sire: CDI MAVERICK 335B Dam: MISS 7P E332
CDI MS RED IRON 7Z MISS 7P A33

Trait	CE	BW	WW	YW	MCE	Milk	MWW	Stay	CW	YG	Marb	Fat	REA	API	TI
EPD	8.9	3	84.2	128.2	5.1	23.4	65.4	17.1	34.3	-.49	.15	-.098	1.08	131	81

Bred AI on 1/23/22 to a red PB SM sire HSF CARDINAL 133G. PE to our red FB SM herd sire EMINENCE AVE13 from 3/1/22 to 8/11/22. Due to calve in April 2023 to the herd sire.



MISS 7P H273

Black Polled 3/4 SM 1/4 AN
ASA# 3901197 H273 BD: 10/29/20

LITTLE CREEK XPRESS 840X MC BLACK SULLIVAN 0181
Sire: LITTLE CREEK DENNIS 490D Dam: MISS 7P C340
LITTLE CREEK ASPEN 151A MISS 7P Z154

Trait	CE	BW	WW	YW	MCE	Milk	MWW	Stay	CW	YG	Marb	Fat	REA	API	TI
EPD	8	4.3	87.2	139.1	6.4	30.6	74.2	16.1	41.9	-.40	.11	-.089	.97	115	76

Lot 58A, K283, black heifer calf, DOB 10/31/22, 70 lbs., out of the AI sire KBHR HONOR H060.



ABS MISS 195H

Double Black Double Polled 1/4 SM 1/2 AN 1/4 CS
ASA# 3869428 195H BD: 11/10/20

REMINGTON LOCK N LOAD54U CCR PAY DIRT 2340C
Sire: W/C RAPID FIRE 2101C Dam: 195F
MOGCK JILT 2101 PMS VANESSA 195D

Trait	CE	BW	WW	YW	MCE	Milk	MWW	Stay	CW	YG	Marb	Fat	REA	API	TI
EPD	10.6	1.1	78	126.2	4.5	27.4	66.3	11.6	50	-.07	.42	-.015	.62	121	78

Lot 59A, bull calf, out of the AI sire W/C REST EASY 752G.



ABS MISS 129H

Double Black Double Polled 5/8 SM 3/16 AN 1/8 CS 1/16 MX
ASA# 3961656 129H BD: 11/17/20

GW ROBUST 605Z XTS PISTOL PETE
Sire: CCR ROBUST 3123C Dam: ABS MISS 129Y
CCR MS IN FORCE 3123A ABS MISS LMAN 729G

Trait	CE	BW	WW	YW	MCE	Milk	MWW	Stay	CW	YG	Marb	Fat	REA	API	TI
EPD	10.1	1	69.2	103.4	4.4	25.2	59.8	12.6	28.4	-.45	.13	-.091	.93	120	74

Bred AI on 11/3/22 to TJ GOLD STRIKE 506J. Due to calve in August 2023.



MISS 7P H323

Black Polled 3/4 SM 1/4 AN
ASA# 3901175 H323 BD: 11/18/20

LITTLE CREEK XPRESS 840X MR NLC ENTREPRENEUR 1227
Sire: LITTLE CREEK DENNIS 490D Dam: MISS 7P F168
LITTLE CREEK ASPEN 151A MISS 7P A174

Trait	CE	BW	WW	YW	MCE	Milk	MWW	Stay	CW	YG	Marb	Fat	REA	API	TI
EPD	8.8	1.8	77.6	117.3	7.6	30.3	69.1	16.7	28.1	-.38	.10	-.093	.72	116	73

Lot 61A, K278, black wf heifer calf, DOB 10/26/22, 58 lbs., out of the AI sire KBHR HONOR H060.

62**ABS MISS 739H**

Black Polled 3/8 SM 1/2 CS 1/8 AN
 ASA# 3869999 739H BD: 11/23/20

TL BOTTOMLINE WS LOADED GUNS J04W
 Sire: GPAR ESSENTIAL Dam: 739A
 SFI/GPAR MS LIL TWINKLE ABS MISS JOKER 739T

Trait	CE	BW	WW	YW	MCE	Milk	MWW	Stay	CW	YG	Marb	Fat	REA	API	TI
EPD	10.2	1.7	62.8	91.6	3.9	22	53.3	13.5	16.5	-.42	-.01	-.083	.76	99	60

Bred AI on 8/7/22 to MR SR HIGHLIFE G1609. Due to calve in May 2023.

**63****ABS MISS 769H**

Double Black Double Polled PB SM
 ASA# 3859197 769H BD: 11/27/20

DIKEMANS SURE BET WS LOADED GUNS J04W
 Sire: TAG BLACK 14A Dam: ABS MISS 769 A
 TAG MS BLACK 1X ABS MISS 769T

Trait	CE	BW	WW	YW	MCE	Milk	MWW	Stay	CW	YG	Marb	Fat	REA	API	TI
EPD	9	2.5	66.8	94.5	4.4	18.3	51.6	16	17.5	-.42	.13	-.092	.71	120	69

Bred AI on 7/26/22 to HOOK'S BOZEMAN 8B. Due to calve in May 2023.

64**ABS MISS 150H**

Double Black Double Polled 3/4 SM 1/4 AN
 ASA# 3859190 150H BD: 12/8/20

REMINGTON LOCK N LOAD54U TAG BLACK 14A
 Sire: W/C RAPID FIRE 2101C Dam: ABS MISS 150F
 MOGCK JILT 2101 ABS MISS 150Z

Trait	CE	BW	WW	YW	MCE	Milk	MWW	Stay	CW	YG	Marb	Fat	REA	API	TI
EPD	10.7	0.9	66.8	104.2	2.9	21.3	54.6	11	37.9	-.23	.28	-.048	.71	114	71

Bred AI on 10/1/22 to WLE UNO MAS X549. Due to calve in July 2023.

65**MISS 7P H370**

Double Black Double Polled 3/4 SM 1/4 AN
 ASA# 3901269 H370 BD: 12/15/20

HOOK'S BEACON 56B MR 7P A300
 Sire: MR 7P D290 Dam: MISS 7P C343
 MISS 7P X214 MISS 7P Y145

Trait	CE	BW	WW	YW	MCE	Milk	MWW	Stay	CW	YG	Marb	Fat	REA	API	TI
EPD	8.9	1.6	75	112.8	6.4	25.9	63.4	17.5	33.2	-.32	.29	-.060	.85	127	75

PE to our red FB SM herd sire EMINENCE AVE13 from 4/26/22 to 8/11/22. Due to calve in February 2023.



Lot 65

66**ABS MISS H329**

Black Double Polled 3/4 SM 1/4 AN
 ASA# 3869421 H329 BD: 12/24/20

VPFS BRANTZ 12B CCR BOULDER 1339A
 Sire: LITTLE CREEK FRANTZ Dam: MISS 7P F329
 LITTLE CREEK BRIELE 551B MISS 7P B221

Trait	CE	BW	WW	YW	MCE	Milk	MWW	Stay	CW	YG	Marb	Fat	REA	API	TI
EPD	11.9	0.5	74.2	111.4	7.3	31	68	13.7	22.8	-.43	.07	-.092	.81	114	72

Bred AI on 10/30/22 to W/C REST EASY 752G. Due to calve in August 2023.

67**ABS MISS H739**

Double Black Double Polled PB SM
 ASA# 3934878 H739 BD: 12/27/20

JM OL STEEL Y50 3C MACHO M450 BZ
 Sire: M4 GOLD STEEL C80 Dam: ABS MISS 739B
 RUBY'S GOLDEN GIRL X50 ABS MISS JOKER 739T

Trait	CE	BW	WW	YW	MCE	Milk	MWW	Stay	CW	YG	Marb	Fat	REA	API	TI
EPD	8.2	3.3	65	92.8	4.7	20.7	53.2	13.2	18.6	-.48	-.08	-.110	.77	101	62

Lot 67A, heifer calf, out of the AI sire W/C REST EASY 752G.



Lot 68



MISS 7P H406

Black Double Polled 1/2 SM 1/4 AN 1/4 CS
 ASA# 3901207 H406 BD: 12/30/20

VPFS BRANTZ 12B MC BLACK SULLIVAN 0181
 Sire: LITTLE CREEK FRANTZ Dam: MISS 7P D275
 LITTLE CREEK BRIELE 551B MISS 7P Y258

Trait	CE	BW	WW	YW	MCE	Milk	MWW	Stay	CW	YG	Marb	Fat	REA	API	TI
EPD	11.2	1.5	74.7	113.8	5.9	31.5	68.8	11.1	30.9	-.35	.01	-.078	.77	113	74

Bred AI on 4/8/22 to PB Angus sire MC BLACK SULLIVAN 0181. PE to our black PB SM herd sire MR 7P D290 from 5/20/22 to 8/9/22. Due to calve in March 2023 to the herd sire.



ABS MISS 98J

Black Polled 3/8 SM 1/2 CS 1/8 AN
 ASA# 4021517 98J BD: 1/11/21

GW ROBUST 605Z RAINS BLK M717H
 Sire: CCR ROBUST 3123C Dam: 98W
 CCR MS IN FORCE 3123A 708F

Trait	CE	BW	WW	YW	MCE	Milk	MWW	Stay	CW	YG	Marb	Fat	REA	API	TI
EPD	8.7	1.3	66.4	95.5	4.2	26	59.2	16	28.7	-.39	.17	-.088	.79	114	68

Bred AI on 5/26/22 to WLE UNO MAS X549. Due to calve in March 2023.



MISS 7P J37

Double Black Double Polled 1/2 SM 1/2 AN
 ASA# 3982954 J37 BD: 1/25/21

SITZ UPWARD 307R SS GOLDMINE L42
 Sire: MCKELLAR UPWARD 8416 Dam: MISS 7P X59
 MC ELAINE 1118 MISS 7P T225

Trait	CE	BW	WW	YW	MCE	Milk	MWW	Stay	CW	YG	Marb	Fat	REA	API	TI
EPD	9.3	1.2	73.6	109	4.5	26.1	62.9	17.2	32.5	-.21	.17	-.043	.62	119	71

Bred AI on 4/8/22 to a black PB SM sire KBHR HONOR H060. PE to our black PB SM herd sire MR 7P D290 from 5/20/22 to 8/9/22. Due to calve in March 2023 to the herd sire.



Lot 71



MISS 7P J45

Double Black Double Polled 5/8 SM 1/4 AN 1/8 CS
 ASA# 3982952 J45 BD: 1/30/21

HOOK'S BEACON 56B CONNEALY COUNSELOR
 Sire: MR 7P D290 Dam: MISS 7P C25
 MISS 7P X214 MISS 7P W2

Trait	CE	BW	WW	YW	MCE	Milk	MWW	Stay	CW	YG	Marb	Fat	REA	API	TI
EPD	9.1	1.4	76.4	112.6	2.8	20.6	58.8	15.8	28.5	-.41	.25	-.073	.98	122	75

Bred AI on 4/8/22 to a black PB SM sire GIBBS 9114G ESSENTIAL. PE to our red FB SM herd sire EMINENCE AVE13 from 5/20/22 to 8/11/22. Due to calve in April 2023 to the herd sire.



ABS MISS 602J

Double Black Double Polled PB SM
 ASA# 3961663 602J BD: 3/17/21

CCR WIDE RANGE 9005A HILB ORACLE C033R
 Sire: SCE UPPER HAND 294E Dam: WOODLAWN SPRING MOTION
 LLL SARAH'S DELIGHT PRS SPRING VELVET X126

Trait	CE	BW	WW	YW	MCE	Milk	MWW	Stay	CW	YG	Marb	Fat	REA	API	TI
EPD	8.7	2.8	72.1	107.8	3.7	16.4	52.4	14.7	16.3	-.57	-.02	-.101	1.08	113	69

Bred AI on 7/13/22 to WLE UNO MAS X549. Due to calve in April 2023.



MISS 7P J125

Black Double Polled 3/4 SM 1/4 AN
ASA# 3982909 J125 BD: 3/26/21

VPFS BRANTZ 12B MC BLACK SULLIVAN 0181
Sire: LITTLE CREEK FRANTZ Dam: MISS 7P C239
LITTLE CREEK BRIELE 551B MISS 7P Z147

Trait	CE	BW	WW	YW	MCE	Milk	MWW	Stay	CW	YG	Marb	Fat	REA	API	TI
EPD	12.3	0.7	69.6	106.7	7.7	32.5	67.2	15.5	32.1	-.34	.06	-.073	.78	114	69

Bred AI on 5/28/22 to a black PB SM sire KBHR HONOR H060. PE to our black PB SM herd sire POWELLS SWITCH BLADE from 6/2/22 to 6/17/22, then to our red FB SM herd sire LITTLE CREEK FRANTZ from 6/18/22 to 8/10/22. Due to calve in April 2023 to LITTLE CREEK FRANTZ.



Lot 73



MISS 7P J132

Double Black Double Polled 1/2 SM 1/2 AN
ASA# 3982888 J132 BD: 3/29/21

SITZ UPWARD 307R MCM TOP GRADE 018X
Sire: MCKELLAR UPWARD 8416 Dam: MISS 7P Z223
MC ELAINE 1118 MISS 7P X205

Trait	CE	BW	WW	YW	MCE	Milk	MWW	Stay	CW	YG	Marb	Fat	REA	API	TI
EPD	10.8	-0.4	71.9	114.1	5.8	29.4	65.4	19.4	39	-.19	.42	-.036	.70	143	79

PE to our black PB SM herd sire POWELLS SWITCH BLADE from 5/2/22 to 6/17/22, then to our red FB SM herd sire LITTLE CREEK FRANTZ from 6/18/22 to 8/10/22. Due to calve in May 2023 to LITTLE CREEK FRANTZ.



MISS 7P J142

Double Black Double Polled 1/2 SM 1/2 AN
ASA# 3982885 J142 BD: 4/12/21

SITZ INVESTMENT 660Z WS PRIME BEEF Z8
Sire: MCKELLAR INVESTMENT 4109 Dam: MISS 7P C197
JMC JEENA BRIT 0403 8420 MISS 7P U1

Trait	CE	BW	WW	YW	MCE	Milk	MWW	Stay	CW	YG	Marb	Fat	REA	API	TI
EPD	11	0.1	76.7	122.3	9.3	24.5	62.8	14.8	42.4	-.09	.22	-.019	.56	123	76

PE to our black PB SM herd sire POWELLS SWITCH BLADE from 5/2/22 to 6/17/22, then to our red FB SM herd sire LITTLE CREEK FRANTZ from 6/18/22 to 8/10/22. Due to calve in February 2023 to POWELLS SWITCH BLADE.



MISS 7P J153

Red Double Polled 3/4 SM 1/4 AN
ASA# 3982832 J153 BD: 4/26/21

VPFS BRANTZ 12B RRJS STEEL FORCE 061U
Sire: LITTLE CREEK FRANTZ Dam: MISS 7P C62
LITTLE CREEK BRIELE 551B MISS7PW402

Trait	CE	BW	WW	YW	MCE	Milk	MWW	Stay	CW	YG	Marb	Fat	REA	API	TI
EPD	10	2.4	74.4	108.3	5.4	33.5	70.7	13.8	23	-.38	-.06	-.082	.73	100	66

PE to our black PB SM herd sire POWELLS SWITCH BLADE from 4/13/22 to 6/17/22, then to our red FB SM herd sire LITTLE CREEK FRANTZ from 6/18/22 to 8/10/22. Due to calve in May 2023 to LITTLE CREEK FRANTZ.



MISS 7P J341

Black Double Polled 3/4 SM 1/4 AN
ASA# 4050102 J341 BD: 12/2/21

VPFS BRANTZ 12B TJ OMAHA 378A
Sire: LITTLE CREEK FRANTZ Dam: MISS 7P F203
LITTLE CREEK BRIELE 551B MISS 7P A239

Trait	CE	BW	WW	YW	MCE	Milk	MWW	Stay	CW	YG	Marb	Fat	REA	API	TI
EPD	12.9	-0.9	68.6	103.7	7.8	28.3	62.6	14.4	27.6	-.35	.03	-.079	.72	114	69

SimAngus yearling heifer. This heifer has never been exposed and she is open.



MISS 7P J344

Black Double Polled PB SM
ASA# 4050168 J344 BD: 12/4/21

VPFS BRANTZ 12B NLC BREAK FREE 72W
Sire: EMINENCE AVE13 Dam: MISS 7P C276
BOURBON AFB1 MISS 7P U160

Trait	CE	BW	WW	YW	MCE	Milk	MWW	Stay	CW	YG	Marb	Fat	REA	API	TI
EPD	11.3	1.8	64.5	92.6	7	27.7	59.9	16.8	12.9	-.51	-.10	-.111	.79	114	65

Pure bred Simmental yearling heifer. This heifer has never been exposed and she is open.



MISS 7P J349

Red Double Polled PB SM
ASA# 4050012 J349 BD: 12/8/21

WS ALL ABOARD B80 LITTLE CREEK DENNIS 490D
Sire: KBHR ALL AMERICAN G104 Dam: MISS 7P G421
KBHR C078 MISS 7P C109

Trait	CE	BW	WW	YW	MCE	Milk	MWW	Stay	CW	YG	Marb	Fat	REA	API	TI
EPD	9.4	2.9	87.6	134.9	5.5	27.7	71.5	12	39	-.48	.28	-.100	1.10	131	87

Pure bred Simmental yearling heifer. This heifer has never been exposed and she is open.



MISS 7P J350

Black Double Polled 3/4 SM 1/4 AN
ASA# 4050153 J350 BD: 12/10/21

VPFS BRANTZ 12B B/R DESTINATION 727-928
Sire: EMINENCE AVE13 Dam: MISS 7P Y316
BOURBON AFB1 TAG BLACK SAVANNA 28 S

Trait	CE	BW	WW	YW	MCE	Milk	MWW	Stay	CW	YG	Marb	Fat	REA	API	TI
EPD	11.2	1.6	66.4	96.7	7.3	30.5	63.6	14.9	24	-.33	.09	-.077	.61	110	66

SimAngus yearling heifer. This heifer has never been exposed and she is open.



MISS 7P J357

Red Polled PB SM
ASA# 4049980 J357 BD: 12/13/21

LITTLE CREEK XPRESS 840X 5T MR R14
Sire: LITTLE CREEK DENNIS 490D Dam: MISS 7P Z8
LITTLE CREEK ASPEN 151A MISS 7P U338

Trait	CE	BW	WW	YW	MCE	Milk	MWW	Stay	CW	YG	Marb	Fat	REA	API	TI
EPD	6.6	4	72.3	105.8	4.5	25.3	61.4	17.4	23	-.49	.00	-.116	.81	114	68

Pure bred Simmental yearling heifer. This heifer has never been exposed and she is open.



MISS 7P J365

Red Polled 3/4 SM 1/4 AN
ASA# 4050036 J365 BD: 12/17/21

LITTLE CREEK XPRESS 840X MR 7P B169
Sire: LITTLE CREEK DENNIS 490D Dam: MISS 7P E329
LITTLE CREEK ASPEN 151A MISS 7P B105

Trait	CE	BW	WW	YW	MCE	Milk	MWW	Stay	CW	YG	Marb	Fat	REA	API	TI
EPD	9.7	2.3	74.9	119.1	7.4	29.7	67.1	17	36	-.43	.07	-.091	.97	116	70

SimAngus yearling heifer. This heifer has never been exposed and she is open.



MISS 7P J373

Red Polled PB SM
ASA# 4049984 J373 BD: 12/22/21

LITTLE CREEK XPRESS 840X ANKONIAN COLOSSAL S039
Sire: LITTLE CREEK DENNIS 490D Dam: MISS 7P X34
LITTLE CREEK ASPEN 151A MISS 7P G285

Trait	CE	BW	WW	YW	MCE	Milk	MWW	Stay	CW	YG	Marb	Fat	REA	API	TI
EPD	7	3.4	75.3	112.6	6.3	37	74.6	14.9	28.8	-.58	-.12	-.131	1.06	106	70

Pure bred Simmental yearling heifer. This heifer has never been exposed and she is open.



MISS 7P 376

Double Black Double Polled PB SM
ASA# 4050183 J376 BD: 12/24/21

HOOK'S BEACON 56B NLC BREAK FREE 72W
Sire: HOOK'S FREEDOM 45F Dam: MISS 7P A299
HOOK'S YUMA 49Y MISS 7P U182

Trait	CE	BW	WW	YW	MCE	Milk	MWW	Stay	CW	YG	Marb	Fat	REA	API	TI
EPD	10.2	2.5	88.1	141	6.8	25.2	69.2	18.7	35.9	-.44	.35	-.067	1.19	151	89

Pure bred Simmental yearling heifer. This heifer has never been exposed and she is open.



MISS 7P J384

Black Polled PB SM
ASA# 4050157 J384 BD: 12/27/21

LITTLE CREEK XPRESS 840X HOOK'S BEACON 56B
Sire: LITTLE CREEK DENNIS 490D Dam: MISS 7P E222
LITTLE CREEK ASPEN 151A MISS7PW238

Trait	CE	BW	WW	YW	MCE	Milk	MWW	Stay	CW	YG	Marb	Fat	REA	API	TI
EPD	8.8	2.7	80.4	122.6	6.8	31	71.1	16.8	31.2	-.57	.13	-.108	1.23	129	79

Pure bred Simmental yearling heifer. This heifer has never been exposed and she is open.



MISS 7P J385

Black Double Polled 3/4 SM 1/4 AN
ASA# 4050174 J385 BD: 12/28/21

VPFS BRANTZ 12B EF COMPLEMENT 8088
Sire: EMINENCE AVE13 Dam: MISS 7P D256
BOURBON AFB1 MISS 7P B275

Trait	CE	BW	WW	YW	MCE	Milk	MWW	Stay	CW	YG	Marb	Fat	REA	API	TI
EPD	11.9	1.2	68.5	103	7.8	25.6	59.9	16	23.6	-.31	.06	-.065	.64	113	66

SimAngus yearling heifer. This heifer has never been exposed and she is open.



MISS 7P J387

Black Double Polled 3/4 SM 1/4 AN
ASA# 4050086 J387 BD: 12/28/21

VPFS BRANTZ 12B MR NLC ENTREPRENEUR 1227
Sire: LITTLE CREEK FRANTZ Dam: MISS 7P F168
LITTLE CREEK BRIELE 551B MISS 7P A174

Trait	CE	BW	WW	YW	MCE	Milk	MWW	Stay	CW	YG	Marb	Fat	REA	API	TI
EPD	10.7	0.9	67.7	98.3	7.2	31.8	65.6	14.9	16.9	-.38	.04	-.083	.62	108	66

SimAngus yearling heifer. This heifer has never been exposed and she is open.



MISS 7P K8

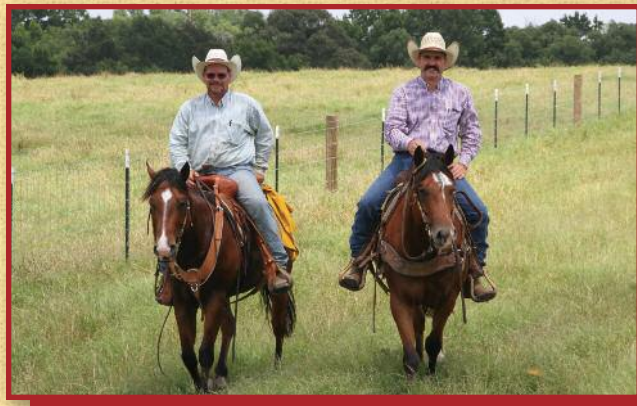
Black Double Polled 3/4 SM 1/4 AN
ASA# 4050852 K8 BD: 1/6/22

VPFS BRANTZ 12B
Sire: **EMINENCE AVE13**
BOURBON AFB1

CONNEALY COUNSELOR
Dam: **MISS 7P A201**
MISS 7P U270

Trait	CE	BW	WW	YW	MCE	Milk	MWW	Stay	CW	YG	Marb	Fat	REA	API	TI
EPD	12.6	0.8	64.5	94.4	5.7	30.7	62.9	15.2	20.1	-.42	-.03	-.082	.80	107	63

SimAngus yearling heifer. This heifer has never been exposed and she is open.



Simbrah Females



MISS 7P G271

Black Polled 1/4 SM 1/2 BR 1/4 AN
ASA# 3746358 G271 BD: 10/18/19

MR MENDEL DE KALLION 436 ET
Sire: **MR KALLION 1352**
MISS KALLION 1731

QUAKER HILL RAMPAGE 0A36
Dam: **MISS 7P D6**
MISS 7P A406

Trait	CE	BW	WW	YW	MCE	Milk	MWW	Stay	CW	YG	Marb	Fat	REA	API	TI
EPD	13.9	0.2	81.9	133.9	7.7	10.7	51.6	3.4	37.4	-.31	-.03	-.070	.78	90	71

PE to our PB Angus herd sire MCKELLAR STUNNER 8185



MISS 7P H46

Black Polled 1/4 SM 1/2 BR 1/4 AN
ASA# 3747138 H46 BD: 1/25/20

MR MENDEL DE KALLION 436 ET
Sire: **MR KALLION 1352**
MISS KALLION 1731

MC UPWARD 0142
Dam: **MISS 7P Z256**
MISS 7P W70

Trait	CE	BW	WW	YW	MCE	Milk	MWW	Stay	CW	YG	Marb	Fat	REA	API	TI
EPD	9.8	2.5	87.1	143.8	5.2	18.8	62.3	3.4	35.1	-.24	-.12	-.066	.58	77	69

PE to our PB Angus herd sire MCKELLAR STUNNER 8185



MISS 7P H62

Black Polled 1/4 SM 1/2 BR 1/4 AN
ASA# 3747181 H62 BD: 2/2/20

MR MENDEL DE KALLION 436 ET
Sire: **MR KALLION 1352**
MISS KALLION 1731

B/R DESTINATION 727-928
Dam: **MISS 7P Y157**
MRS 7P R577

Trait	CE	BW	WW	YW	MCE	Milk	MWW	Stay	CW	YG	Marb	Fat	REA	API	TI
EPD	10.5	1.4	76.6	121.3	6.1	19	57.3	5.5	33.9	-.21	-.01	-.063	.49	85	66

PE to our PB Angus herd sire MCKELLAR STUNNER 8185



~ NOTES ~



Lot 92



MISS 7P H85

Black Polled 1/4 SM 1/2 BR 1/4 AN
 ASA# 3747145 H85 BD: 2/18/20

MR MENDEL DE KALLION 436 ET EXAR UPSHOT 0562B
 Sire: MR KALLION 1352 Dam: MISS 7P B227
 MISS KALLION 1731 MISS7PW218

Trait	CE	BW	WW	YW	MCE	Milk	MWW	Stay	CW	YG	Marb	Fat	REA	API	TI
EPD	12.4	0.7	76.5	126.7	7.4	16.6	54.8	4.3	36.4	-.21	-.02	-.054	.59	87	67

PE to our PB Angus herd sire MCKELLAR STUNNER 8185



MISS 7P H91

Black Polled 1/2 SM 1/2 BR
 ASA# 3747199 H91 BD: 2/19/20

MR MENDEL DE KALLION 436 ET MR 7P R580
 Sire: MR KALLION 1352 Dam: MISS 7P Z121
 MISS KALLION 1731 MISS 7P U31

Trait	CE	BW	WW	YW	MCE	Milk	MWW	Stay	CW	YG	Marb	Fat	REA	API	TI
EPD	10	1.3	71.8	113.8	5.1	15.4	51.2	4.7	23	-.35	-.26	-.086	.60	73	60

PE to our PB Angus herd sire MCKELLAR STUNNER 8185



MISS 7P H97

Red Polled 1/2 SM 1/2 BR
 ASA# 3747120 H97 BD: 2/21/20

MR MENDEL DE KALLION 436 ET DIKEMANS SURE BET
 Sire: MR KALLION 1352 Dam: MISS 7P Y187
 MISS KALLION 1731 MISS 7P U254

Trait	CE	BW	WW	YW	MCE	Milk	MWW	Stay	CW	YG	Marb	Fat	REA	API	TI
EPD	12.5	0.2	68.2	110.6	6	13.3	47.4	5.4	21.5	-.38	-.08	-.090	.63	89	64

PE to our PB Angus herd sire MCKELLAR STUNNER 8185



MISS 7P H103

Black Polled 3/8 SM 1/2 BR 1/8 CS
 ASA# 3747162 H103 BD: 2/23/20

MR MENDEL DE KALLION 436 ET MR 7P R580
 Sire: MR KALLION 1352 Dam: MISS 7P Z410
 MISS KALLION 1731 MISS 7P U225

Trait	CE	BW	WW	YW	MCE	Milk	MWW	Stay	CW	YG	Marb	Fat	REA	API	TI
EPD	8.4	2.6	83.9	133.8	4.4	17.6	59.5	3.8	32.3	-.38	-.22	-.097	.72	74	67

PE to our PB Angus herd sire MCKELLAR STUNNER 8185. Due to calve March 2023.



MISS 7P H113

Black Polled 1/4 SM 1/2 BR 1/8 CS 1/8 MX
 ASA# 3747219 H113 BD: 3/2/20

MR MENDEL DE KALLION 436 ET ANKONIAN CAESAR T004
 Sire: MR KALLION 1352 Dam: MISS 7P Z314
 MISS KALLION 1731 MISS 7P U200

Trait	CE	BW	WW	YW	MCE	Milk	MWW	Stay	CW	YG	Marb	Fat	REA	API	TI
EPD	12.2	-0.3	78.5	131.5	6.9	15.3	54.5	0.7	35.3	-.30	-.13	-.079	.65	77	67

PE to our PB Angus herd sire MCKELLAR STUNNER 8185



MISS 7P H189

Black Polled 1/4 SM 1/2 BR 1/4 AN
 ASA# 3901260 H189 BD: 9/16/20

MR MENDEL DE KALLION 436 ET QUAKER HILL RAMPAGE 0A36
 Sire: MR KALLION 1352 Dam: MISS 7P D172
 MISS KALLION 1731 MISS 7P T306

Trait	CE	BW	WW	YW	MCE	Milk	MWW	Stay	CW	YG	Marb	Fat	REA	API	TI
EPD	13.7	-0.5	79	126	6.9	15.3	54.7	3.6	34.2	-.30	-.03	-.072	.71	89	70

Lot 97A, K307, black bull calf, DOB 10/28/22, 72 lbs., out of PB Angus AI sire MC BLACK SULLIVAN 0181.

98**MISS 7P H200**

Black Scurred 1/2 SM 1/2 BR
 ASA# 3901284 H200 BD: 9/19/20

MR MENDEL DE KALLION 436 ET PMS PRINCIPAL 301U
 Sire: MR KALLION 1352 Dam: MISS 7P B35
 MISS KALLION 1731 MISS 7P Z17

Trait	CE	BW	WW	YW	MCE	Milk	MWW	Stay	CW	YG	Marb	Fat	REA	API	TI
EPD	11.2	1.1	74.9	117.1	5.2	11.6	49	4.4	21.7	-.37	-.17	-.089	.63	81	64

PE to our PB Angus herd sire MCKELLAR STUNNER 8185. Due to calve January 2023.



Lot 98

99**MISS 7P H202**

Black Polled 1/2 BR 1/2 CS
 ASA# (3901229) H202 BD: 9/20/20

MR MENDEL DE KALLION 436 ET
 Sire: MR KALLION 1352 Dam: MISS 7P Y258
 MISS KALLION 1731

Trait	CE	BW	WW	YW	MCE	Milk	MWW	Stay	CW	YG	Marb	Fat	REA	API	TI
EPD	9.2	2.5	80.2	125.8	4.2	17.2	57.3	-1.5	21.7	-.39	-.18	-.097	.62	65	66

PE to our PB Angus herd sire MCKELLAR STUNNER 8185

**100****MISS 7P H219**

Black Polled 1/2 SM 1/2 BR
 ASA# 3901389 H219 BD: 9/26/20

MR MENDEL DE KALLION 436 ET GIBBS 2594Z SM UPG P342
 Sire: MR KALLION 1352 Dam: MISS 7P D282
 MISS KALLION 1731 MISS 7P Y363

Trait	CE	BW	WW	YW	MCE	Milk	MWW	Stay	CW	YG	Marb	Fat	REA	API	TI
EPD	10.2	2.2	74.8	122.5	5	10	47.4	5	21.4	-.40	-.08	-.098	.66	84	65

Lot 100A, L6, black bull calf, DOB 1/4/23, 69 lbs., out of PB Angus herd sire MCKELLAR STUNNER 8181.

101**MISS 7P H226**

Black Polled 1/2 BR 1/2 CS
 ASA# (3901372) H226 BD: 10/4/20

MR MENDEL DE KALLION 436 ET
 Sire: MR KALLION 1352 Dam: X358
 MISS KALLION 1731

Trait	CE	BW	WW	YW	MCE	Milk	MWW	Stay	CW	YG	Marb	Fat	REA	API	TI
EPD	14.5	-1.8	68.1	105.8	7.4	14.4	48.4	-1.9	17.3	-.39	-.18	-.097	.57	74	64

Lot 101A, L7, black bull calf, DOB 1/4/23, 65 lbs., out of PB Angus AI sire MC BLACK SULLIVAN 0181.

102**MISS 7P H229**

Red Polled 1/2 SM 1/2 BR
 ASA# 3901327 H229 BD: 10/7/20

MR MENDEL DE KALLION 436 ET PMS PRINCIPAL 301U
 Sire: MR KALLION 1352 Dam: MISS 7P B279
 MISS KALLION 1731 MISS 7P X170

Trait	CE	BW	WW	YW	MCE	Milk	MWW	Stay	CW	YG	Marb	Fat	REA	API	TI
EPD	10.7	0.8	74.7	120.5	5	12.9	50.2	5.3	26.6	-.41	-.22	-.096	.76	80	63

PE to our PB Angus herd sire MCKELLAR STUNNER 8185



Lot 102



Lot 104

103 MISS 7P H235

Black Polled 1/4 SM 1/2 BR 1/4 AN
 ASA# 3901232 H235 BD: 10/11/20

MR MENDEL DE KALLION 436 ET KESSLERS FRONTMAN R001
 Sire: MR KALLION 1352 Dam: MISS 7P A277
 MISS KALLION 1731 MISS 7P Y281

Trait	CE	BW	WW	YW	MCE	Milk	MWW	Stay	CW	YG	Marb	Fat	REA	API	TI
EPD	12.1	0.2	73.9	119.4	6.3	13.8	50.7	4.9	28	-.26	-.10	-.062	.58	83	64

PE to our PB Angus herd sire MCKELLAR STUNNER 8185

104 MISS 7P H264

Black Polled 1/2 SM 1/2 BR
 ASA# 3901362 H264 BD: 10/26/20

MR MENDEL DE KALLION 436 ET MCM TOP GRADE 018X
 Sire: MR KALLION 1352 Dam: MISS 7P Z157
 MISS KALLION 1731 MISS 7P W13

Trait	CE	BW	WW	YW	MCE	Milk	MWW	Stay	CW	YG	Marb	Fat	REA	API	TI
EPD	10.9	0.4	69.9	116	6.1	17.1	52.1	5.8	23.9	-.36	-.04	-.094	.58	90	66

Lot 104A, K325, black bull calf, DOB 11/28/22, 60 lbs., out of PB Angus herd sire MCKELLAR STUNNER 8181.

106 MISS 7P H274

Black Polled 1/4 SM 1/2 BR 1/4 AN
 ASA# 3901326 H274 BD: 10/29/20

MR MENDEL DE KALLION 436 ET B/R DESTINATION 727-928
 Sire: MR KALLION 1352 Dam: MISS 7P Y142
 MISS KALLION 1731 MISS7PW150

Trait	CE	BW	WW	YW	MCE	Milk	MWW	Stay	CW	YG	Marb	Fat	REA	API	TI
EPD	9.6	1.8	79.1	126.6	4.8	12.2	51.7	4.6	30.2	-.20	-.01	-.061	.43	82	66

Lot 106A, L26, black bull calf, DOB 1/16/23, 66 lbs., out of PB Simmental AI sire KBHR HONOR H060.

105 MISS 7P H265

Black Horned 1/2 SM 1/2 BR
 ASA# 3901236 H265 BD: 10/26/20

MR MENDEL DE KALLION 436 ET TNT E-Z-3 X360
 Sire: MR KALLION 1352 Dam: MISS 7P A235
 MISS KALLION 1731 MISS 7P P267

Trait	CE	BW	WW	YW	MCE	Milk	MWW	Stay	CW	YG	Marb	Fat	REA	API	TI
EPD	11.8	0.6	74.2	118.7	5	15.5	52.5	5.4	27.5	-.40	-.14	-.099	.70	86	66

Lot 105A, L33, black bull calf, DOB 1/20/23, 68 lbs., out of PB Simmental AI sire KBHR HONOR H060.

107 MISS 7P H280

Black Polled 1/2 SM 1/2 BR
 ASA# 3901302 H280 BD: 10/31/20

MR MENDEL DE KALLION 436 ET TNT E-Z-3 X360
 Sire: MR KALLION 1352 Dam: MISS 7P Z134
 MISS KALLION 1731 MISS 7P U277

Trait	CE	BW	WW	YW	MCE	Milk	MWW	Stay	CW	YG	Marb	Fat	REA	API	TI
EPD	12.2	0.1	70.6	116.2	6	19.9	55.2	5.7	27.5	-.34	-.08	-.085	.64	90	66

Lot 107A, L20, black heifer calf, DOB 1/12/23, 65 lbs., out of PB Simmental AI sire KBHR HONOR H060.

108 MISS 7P H281

Red Scurred 1/4 SM 1/2 BR 1/4 AN
 ASA# 3901373 H281 BD: 10/31/20

MR MENDEL DE KALLION 436 ET SRS J914 PREFERRED BEEF
 Sire: MR KALLION 1352 Dam: MISS 7P A174
 MISS KALLION 1731 B D V N322 OF BANDO 155

Trait	CE	BW	WW	YW	MCE	Milk	MWW	Stay	CW	YG	Marb	Fat	REA	API	TI
EPD	11.4	0.8	74.2	120.8	6.1	13.2	50.2	4.3	23.5	-.20	-.02	-.059	.34	83	65

Bred AI on 4/8/22 to a black PB SM sire KBHR HONOR H060. PE to our PB Angus herd sire MCKELLAR STUNNER 8185. Due to calve in January 2023 to AI sire.

109**MISS 7P H283**

Red Polled 1/4 SM 1/2 BR 1/4 AN
 ASA# 3901313 H283 BD: 11/1/20

MR MENDEL DE KALLION 436 ET B/R DESTINATION 727-928
 Sire: MR KALLION 1352 Dam: MISS 7P Y153
 MISS KALLION 1731 MISS 7P M327

Trait	CE	BW	WW	YW	MCE	Milk	MWW	Stay	CW	YG	Marb	Fat	REA	API	TI
EPD	11.4	0.9	71.5	119.5	5.9	10.4	46.1	6.6	33.6	-.18	.02	-.057	.43	90	64

Lot 109A, L32, black bull calf, DOB 1/20/23, 72 lbs., out of PB Angus AI sire MC BLACK SULLIVAN 0181



Lot 109

110**MISS 7P H289**

Black Polled 1/2 SM 1/2 BR
 ASA# 3901303 H289 BD: 11/4/20

MR MENDEL DE KALLION 436 ET MCM TOP GRADE 018X
 Sire: MR KALLION 1352 Dam: MISS 7P Z169
 MISS KALLION 1731 MISS 7P M327

Trait	CE	BW	WW	YW	MCE	Milk	MWW	Stay	CW	YG	Marb	Fat	REA	API	TI
EPD	10.9	1.3	81.7	133.9	5.5	15.4	56.2	7.5	32.5	-.34	-.04	-.089	.66	97	72

Bred AI on 4/8/22 to a black PB SM sire KBHR HONOR H060. PE to our PB Angus herd sire MCKELLAR STUNNER 8185. Due to calve in January 2023 to AI sire.

111**MISS 7P H292**

Black Polled 3/8 SM 1/2 BR 1/8 AN
 ASA# 3901374 H292 BD: 11/5/20

MR MENDEL DE KALLION 436 ET PMS PRINCIPAL 301U
 Sire: MR KALLION 1352 Dam: MISS 7P A371
 MISS KALLION 1731 MISS 7P X272

Trait	CE	BW	WW	YW	MCE	Milk	MWW	Stay	CW	YG	Marb	Fat	REA	API	TI
EPD	9.4	2.8	84.6	134.9	4.8	12.7	55	5.3	27.4	-.32	-.11	-.076	.65	79	67

Bred AI on 4/8/22 to PB Angus sire MC BLACK SULLIVAN 0181. PE to our PB Angus herd sire MCKELLAR STUNNER 8185. Due to calve "twins" in January 2023 to AI sire.

112**MISS 7P H295**

Black Polled 1/2 SM 1/2 BR
 ASA# 3901347 H295 BD: 11/5/20

MR MENDEL DE KALLION 436 ET 5T MR R14
 Sire: MR KALLION 1352 Dam: MISS 7P Y370
 MISS KALLION 1731 MISS7PW188

Trait	CE	BW	WW	YW	MCE	Milk	MWW	Stay	CW	YG	Marb	Fat	REA	API	TI
EPD	12.1	0.1	68.5	108.3	5	12.9	47.1	6.2	22.7	-.41	-.20	-.105	.63	83	61

Bred AI on 4/8/22 to a black PB SM sire KBHR HONOR H060. PE to our PB Angus herd sire MCKELLAR STUNNER 8185. Due to calve in January 2023 to AI sire.

113**MISS 7P H304**

Black Polled 3/8 SM 1/2 BR 1/8 AN
 ASA# 3901286 H304 BD: 11/9/20

MR MENDEL DE KALLION 436 ET 5T MR R14
 Sire: MR KALLION 1352 Dam: MISS 7P A278
 MISS KALLION 1731 MISS 7P X252

Trait	CE	BW	WW	YW	MCE	Milk	MWW	Stay	CW	YG	Marb	Fat	REA	API	TI
EPD	13.7	-1.7	60.7	100.1	5.9	5.8	36.1	5.8	19.7	-.26	-.09	-.079	.35	85	58

Bred AI on 4/8/22 to PB Angus sire MC BLACK SULLIVAN 0181. PE to our PB Angus herd sire MCKELLAR STUNNER 8185. Due to calve in March 2023 to herd sire.

114**MISS 7P H312**

Black Scurred 1/2 SM 1/2 BR
 ASA# 3901363 H312 BD: 11/12/20

MR MENDEL DE KALLION 436 ET 5T MR R14
 Sire: MR KALLION 1352 Dam: MISS 7P B304
 MISS KALLION 1731 PMS MS 347W

Trait	CE	BW	WW	YW	MCE	Milk	MWW	Stay	CW	YG	Marb	Fat	REA	API	TI
EPD	9.5	2.4	72.7	113.8	4.2	12.6	48.9	5.9	20.8	-.38	-.18	-.096	.59	77	61

PE to our PB Angus herd sire MCKELLAR STUNNER 8185

115**MISS 7P H319**

Black Polled 1/4 SM 1/2 BR 1/4 AN
 ASA# 3901211 H319 BD: 11/16/20

MR MENDEL DE KALLION 436 ET RRJS STEEL FORCE 061U
 Sire: MR KALLION 1352 Dam: MISS 7P B306
 MISS KALLION 1731 MISS 7P X252

Trait	CE	BW	WW	YW	MCE	Milk	MWW	Stay	CW	YG	Marb	Fat	REA	API	TI
EPD	11.2	0.9	71.6	118.3	5.5	13.7	49.4	3.8	23.7	-.19	-.07	-.055	.35	78	62

Bred AI on 4/8/22 to PB Angus sire MC BLACK SULLIVAN 0181. PE to our PB Angus herd sire MCKELLAR STUNNER 8185 from 5/10/22 to 10/7/22. Due to calve in March 2023 to herd sire.

116**MISS 7P H365**

Red Polled 3/8 SM 1/2 BR 1/8 AN
 ASA# 3901357 H365 BD: 12/10/20

MR MENDEL DE KALLION 436 ET PMS PRINCIPAL 301U
 Sire: MR KALLION 1352 Dam: MISS 7P B56
 MISS KALLION 1731 MISS 7P U329

Trait	CE	BW	WW	YW	MCE	Milk	MWW	Stay	CW	YG	Marb	Fat	REA	API	TI
EPD	10.5	1.7	74	119.6	5.5	9.9	46.9	3.5	24.7	-.35	-.14	-.084	.63	73	61

PE to our PB Angus herd sire MCKELLAR STUNNER 8185

117**MISS 7P H373**

Black Polled 1/2 SM 1/2 BR
 ASA# 3901233 H373 BD: 12/16/20

MR MENDEL DE KALLION 436 ET ELLINGSON LEGACY M229
 Sire: MR KALLION 1352 Dam: MISS7PW199
 MISS KALLION 1731 MISS 7P S362

Trait	CE	BW	WW	YW	MCE	Milk	MWW	Stay	CW	YG	Marb	Fat	REA	API	TI
EPD	14.3	-1.4	69	114.1	6.7	16.4	50.9	3	31.9	-.43	-.21	-.112	.77	83	64

PE to our PB Angus herd sire MCKELLAR STUNNER 8185

118**MISS 7P H389**

Black Polled 1/4 SM 1/2 BR 1/4 AN
 ASA# 3901185 H389 BD: 12/21/20

MR MENDEL DE KALLION 436 ET MR NLC ENTREPRENEUR 1227
 Sire: MR KALLION 1352 Dam: MISS 7P D15
 MISS KALLION 1731 MISS 7P Y316

Trait	CE	BW	WW	YW	MCE	Milk	MWW	Stay	CW	YG	Marb	Fat	REA	API	TI
EPD	12.1	0.1	77.8	124.8	7.8	14.8	53.6	4.6	30	-.21	.02	-.057	.48	90	69

PE to our PB Angus herd sire MCKELLAR STUNNER 8185. Due to calve in February 2023.

119**MISS 7P H392**

Black Polled 1/4 SM 1/2 BR 1/4 AN
 ASA# 3901340 H392 BD: 12/23/20

MR MENDEL DE KALLION 436 ET KESSLERS FRONTMAN R001
 Sire: MR KALLION 1352 Dam: MISS 7P A140
 MISS KALLION 1731 MISS 7P N406

Trait	CE	BW	WW	YW	MCE	Milk	MWW	Stay	CW	YG	Marb	Fat	REA	API	TI
EPD	14.6	-1.5	67.2	107.7	7.9	15.7	49.2	4.7	21.8	-.26	-.12	-.060	.49	84	62

PE to our PB Angus herd sire MCKELLAR STUNNER 8185. Due to calve in February 2023.

120**MISS 7P H393**

Black Polled 1/2 SM 1/2 BR
 ASA# 3901393 H393 BD: 12/23/20

MR MENDEL DE KALLION 436 ET GIBBS 2594Z SM UPG P342
 Sire: MR KALLION 1352 Dam: MISS 7P E410
 MISS KALLION 1731 MISS 7P U157

Trait	CE	BW	WW	YW	MCE	Milk	MWW	Stay	CW	YG	Marb	Fat	REA	API	TI
EPD	14.2	-1	66.1	109.3	7.2	14.5	47.4	3.1	19.3	-.40	-.11	-.095	.63	86	64

PE to our PB Angus herd sire MCKELLAR STUNNER 8185

121**MISS 7P H397**

Black Polled 3/8 SM 1/2 BR 1/8 CS
 ASA# 3901310 H397 BD: 12/23/20

MR MENDEL DE KALLION 436 ET GW LUCKY MAN 644N
 Sire: MR KALLION 1352 Dam: MISS 7P Y216
 MISS KALLION 1731 MISS 7P P183

Trait	CE	BW	WW	YW	MCE	Milk	MWW	Stay	CW	YG	Marb	Fat	REA	API	TI
EPD	14.4	-0.8	71.9	117.8	7	19.7	55.6	4.6	25.9	-.35	-.13	-.100	.54	85	65

PE to our PB Angus herd sire MCKELLAR STUNNER 8185. Due to calve in January 2023.



Lot 122

122**MISS 7P J2**

Black Polled 1/2 SM 1/2 BR
 ASA# 3982967 J2 BD: 1/1/21

MR MENDEL DE KALLION 436 ET MR ISHEE DOUBLE UP 509
 Sire: MR KALLION 1352 Dam: MISS 7P E167
 MISS KALLION 1731 MISS 7P A171

Trait	CE	BW	WW	YW	MCE	Milk	MWW	Stay	CW	YG	Marb	Fat	REA	API	TI
EPD	12.4	-0.3	73.6	123	5.3	14.9	51.7	3.8	30	-.34	-.08	-.084	.68	89	68

PE to our PB Angus herd sire MCKELLAR STUNNER 8185

123**MISS 7P J3**

Black Polled 1/4 SM 1/2 BR 1/4 AN
 ASA# 3982966 J3 BD: 1/2/21

MR MENDEL DE KALLION 436 ET PERRY POWER DESIGN 715
 Sire: MR KALLION 1352 Dam: MISS 7P Z240
 MISS KALLION 1731 MISS 7P W69

Trait	CE	BW	WW	YW	MCE	Milk	MWW	Stay	CW	YG	Marb	Fat	REA	API	TI
EPD	10.6	2.1	86.9	138.8	4.1	19.5	62.9	1.9	38.4	-.21	.01	-.055	.59	82	72

PE to our PB Angus herd sire MCKELLAR STUNNER 8185



Lot 123

124**MISS 7P J13**

Red Polled 1/2 SM 1/2 BR
 ASA# 3982917 J13 BD: 1/13/21

MR MENDEL DE KALLION 436 ET NLC BREAK FREE 72W
 Sire: MR KALLION 1352 Dam: MISS 7P A299
 MISS KALLION 1731 MISS 7P U182

Trait	CE	BW	WW	YW	MCE	Milk	MWW	Stay	CW	YG	Marb	Fat	REA	API	TI
EPD	11.1	1.8	82.3	133.8	5.9	13.7	54.8	5.6	30.9	-.42	-.09	-.094	.86	90	70

PE to our PB Angus herd sire MCKELLAR STUNNER 8185

125**MISS 7P J14**

Red Scurred 1/4 SM 1/2 BR 1/4 AN
 ASA# 3982880 J14 BD: 1/13/21

MR MENDEL DE KALLION 436 ET KESSLERS FRONTMAN R001
 Sire: MR KALLION 1352 Dam: MISS 7P A219
 MISS KALLION 1731 MISS 7P S12

Trait	CE	BW	WW	YW	MCE	Milk	MWW	Stay	CW	YG	Marb	Fat	REA	API	TI
EPD	10.5	1.3	72.2	116.3	5.1	15.4	51.5	6.2	26.5	-.23	-.13	-.058	.49	78	60

PE to our PB Angus herd sire MCKELLAR STUNNER 8185

126**MISS 7P J15**

Black Scurred 1/2 SM 1/2 BR
 ASA# 3982865 J15 BD: 1/13/21

MR MENDEL DE KALLION 436 ET NLC BREAK FREE 72W
 Sire: MR KALLION 1352 Dam: MISS 7P C252
 MISS KALLION 1731 MISS7PW173

Trait	CE	BW	WW	YW	MCE	Milk	MWW	Stay	CW	YG	Marb	Fat	REA	API	TI
EPD	13.1	0	74.3	124.6	6.5	13.5	50.6	6	30.2	-.42	-.15	-.098	.81	91	67

PE to our PB Angus herd sire MCKELLAR STUNNER 8185

127**MISS 7P J18**

Red Polled 1/2 SM 1/2 BR
 ASA# 3982850 J18 BD: 1/15/21

MR MENDEL DE KALLION 436 ET PMS PRINCIPAL 301U
 Sire: MR KALLION 1352 Dam: MISS 7P Y246
 MISS KALLION 1731 MISS 7P T138

Trait	CE	BW	WW	YW	MCE	Milk	MWW	Stay	CW	YG	Marb	Fat	REA	API	TI
EPD	9.6	1.8	70.9	113.1	4.2	15.5	50.9	5.8	20.7	-.39	-.19	-.092	.66	78	61

PE to our PB Angus herd sire MCKELLAR STUNNER 8185

128**MISS 7P J28**

Black Polled 1/2 SM 1/2 BR
 ASA# 3982870 J28 BD: 1/21/21

MR MENDEL DE KALLION 436 ET GIBBS 2594Z SM UPG P342
 Sire: MR KALLION 1352 Dam: MISS 7P E378
 MISS KALLION 1731 MISS 7P B340

Trait	CE	BW	WW	YW	MCE	Milk	MWW	Stay	CW	YG	Marb	Fat	REA	API	TI
EPD	10.5	1.8	76.3	124.4	5.1	11.6	49.7	4.6	22.2	-.40	-.05	-.093	.69	87	67

PE to our PB Angus herd sire MCKELLAR STUNNER 8185



Lot 128

129**MISS 7P J31**

Black Polled 1/2 SM 1/2 BR
 ASA# 3982911 J31 BD: 1/24/21

MR MENDEL DE KALLION 436 ET 5T MR R14
 Sire: MR KALLION 1352 Dam: MISS 7P Z346
 MISS KALLION 1731 MISS7PW209

Trait	CE	BW	WW	YW	MCE	Milk	MWW	Stay	CW	YG	Marb	Fat	REA	API	TI
EPD	9.2	2.3	64.5	102.4	3.3	7.2	39.5	4.9	15.5	-.39	-.20	-.103	.51	71	55

PE to our PB Angus herd sire MCKELLAR STUNNER 8185

130**MISS 7P J38**

Black Polled 1/2 SM 1/2 BR
 ASA# 3982858 J38 BD: 1/25/21

MR MENDEL DE KALLION 436 ET MF STRAIGHTFORWARD Y9
 Sire: MR KALLION 1352 Dam: MISS 7P D108
 MISS KALLION 1731 MISS 7P A235

Trait	CE	BW	WW	YW	MCE	Milk	MWW	Stay	CW	YG	Marb	Fat	REA	API	TI
EPD	13.4	-0.1	75.9	126	7	17.1	55	6.4	33.4	-.34	-.14	-.087	.69	93	68

PE to our PB Angus herd sire MCKELLAR STUNNER 8185

**131****MISS 7P J42**

Black Polled 1/4 SM 1/2 BR 1/4 AN
 ASA# 3982905 J42 BD: 1/29/21

MR MENDEL DE KALLION 436 ET MC UPWARD 0142
 Sire: MR KALLION 1352 Dam: MISS 7P B125
 MISS KALLION 1731 MISS 7P Z117

Trait	CE	BW	WW	YW	MCE	Milk	MWW	Stay	CW	YG	Marb	Fat	REA	API	TI
EPD	11.8	0.8	78.1	133.1	6.3	14.1	53.1	3.8	30.6	-.24	-.07	-.067	.51	84	67

PE to our PB Angus herd sire MCKELLAR STUNNER 8185

132**MISS 7P J43**

Red Polled 1/2 SM 1/2 BR
 ASA# 3982867 J43 BD: 1/30/21

MR MENDEL DE KALLION 436 ET MR 7P R580
 Sire: MR KALLION 1352 Dam: MISS 7P Z122
 MISS KALLION 1731 MISS 7P U359

Trait	CE	BW	WW	YW	MCE	Milk	MWW	Stay	CW	YG	Marb	Fat	REA	API	TI
EPD	9.4	1.8	70.8	116.4	4.5	16.7	52.1	4.8	24.4	-.38	-.24	-.095	.64	73	60

PE to our PB Angus herd sire MCKELLAR STUNNER 8185

133**MISS 7P J44**

Black Polled 1/4 SM 1/2 BR 1/4 AN
 ASA# 3982916 J44 BD: 1/30/21

MR MENDEL DE KALLION 436 ET JC MR NATIONAL 610Y
 Sire: MR KALLION 1352 Dam: MISS 7P C212
 MISS KALLION 1731 MISS 7P A189

Trait	CE	BW	WW	YW	MCE	Milk	MWW	Stay	CW	YG	Marb	Fat	REA	API	TI
EPD	13.2	-0.9	68	114	7	14.6	48.6	4.8	23.4	-.20	.16	-.053	.38	98	68

PE to our PB Angus herd sire MCKELLAR STUNNER 8185

134**MISS 7P J50**

Black Polled 1/4 SM 1/2 BR 1/4 AN
 ASA# 3982940 J50 BD: 1/31/21

MR MENDEL DE KALLION 436 ET MR 7P B169
 Sire: MR KALLION 1352 Dam: MISS 7P E449
 MISS KALLION 1731 MISS 7P A290

Trait	CE	BW	WW	YW	MCE	Milk	MWW	Stay	CW	YG	Marb	Fat	REA	API	TI
EPD	12.7	0.8	69.3	120.2	7	14.4	49	5.1	31.6	-.24	-.03	-.060	.57	86	63

PE to our PB Angus herd sire MCKELLAR STUNNER 8185

135**MISS 7P J59**

Black Polled 1/4 SM 1/2 BR 1/4 AN
 ASA# 3982855 J59 BD: 2/5/21

MR MENDEL DE KALLION 436 ET JC MR NATIONAL 610Y
 Sire: MR KALLION 1352 Dam: MISS 7P B281
 MISS KALLION 1731 MISS7PW217

Trait	CE	BW	WW	YW	MCE	Milk	MWW	Stay	CW	YG	Marb	Fat	REA	API	TI
EPD	11.4	0.2	69.6	116.6	4.8	16.7	51.4	5.8	26.8	-.20	.11	-.053	.44	93	67

PE to our PB Angus herd sire MCKELLAR STUNNER 8185

136**MISS 7P J60**

Red Polled 1/2 SM 1/2 BR
 ASA# 3982873 J60 BD: 2/5/21

MR MENDEL DE KALLION 436 ET ANKONIAN COLOSSAL S039
 Sire: MR KALLION 1352 Dam: MISS 7P A33
 MISS KALLION 1731 N412

Trait	CE	BW	WW	YW	MCE	Milk	MWW	Stay	CW	YG	Marb	Fat	REA	API	TI
EPD	11.7	0.2	69.4	111.4	7.3	17.2	51.9	3.1	22.9	-.38	-.22	-.098	.59	76	61

PE to our PB Angus herd sire MCKELLAR STUNNER 8185



Lot 136

137**MISS 7P J64**

Black Polled 1/2 SM 1/2 BR
 ASA# 3982871 J64 BD: 2/7/21

MR MENDEL DE KALLION 436 ET HL GAME PLAN R42X
 Sire: MR KALLION 1352 Dam: MISS 7P B301
 MISS KALLION 1731 MISS7PW188

Trait	CE	BW	WW	YW	MCE	Milk	MWW	Stay	CW	YG	Marb	Fat	REA	API	TI
EPD	9	2.7	74.1	124.3	5.1	16.2	53.2	4.1	27.9	-.40	-.28	-.095	.74	70	60

PE to our PB Angus herd sire MCKELLAR STUNNER 8185

138**MISS 7P J70**

Red Polled 1/4 SM 1/2 BR 1/4 AN
 ASA# 3982826 J70 BD: 2/10/21

MR MENDEL DE KALLION 436 ET PERRY POWER DESIGN 715
 Sire: MR KALLION 1352 Dam: MISS 7P Y391
 MISS KALLION 1731 MISS 7P W82

Trait	CE	BW	WW	YW	MCE	Milk	MWW	Stay	CW	YG	Marb	Fat	REA	API	TI
EPD	13.7	-0.5	69	114.1	6.2	17.4	51.8	4	30.8	-.23	-.02	-.062	.51	87	64

PE to our PB Angus herd sire MCKELLAR STUNNER 8185. Due to calve in February 2023.

139**MISS 7P J75**

Black Polled 1/4 SM 1/2 BR 1/4 AN
 ASA# 3982859 J75 BD: 2/13/21

MR MENDEL DE KALLION 436 ET MC BLACK SULLIVAN 0181
 Sire: MR KALLION 1352 Dam: MISS 7P B237
 MISS KALLION 1731 MISS 7P X290

Trait	CE	BW	WW	YW	MCE	Milk	MWW	Stay	CW	YG	Marb	Fat	REA	API	TI
EPD	12.4	0.6	79.3	133.5	6.3	14.3	53.9	4.8	37.7	-.17	.00	-.050	.51	90	69

PE to our PB Angus herd sire MCKELLAR STUNNER 8185

140**MISS 7P J80**

Black Polled 1/4 SM 1/2 BR 1/4 AN
 ASA# 3982872 J80 BD: 2/18/21

MR MENDEL DE KALLION 436 ET MC BLACK SULLIVAN 0181
 Sire: MR KALLION 1352 Dam: MISS 7P B278
 MISS KALLION 1731 MISS 7P Y80

Trait	CE	BW	WW	YW	MCE	Milk	MWW	Stay	CW	YG	Marb	Fat	REA	API	TI
EPD	14.7	-1.6	73	123.1	8.2	18.1	54.5	5.7	35.9	-.19	-.04	-.051	.53	94	68

PE to our PB Angus herd sire MCKELLAR STUNNER 8185

141**MISS 7P J90**

Black Polled 1/2 SM 1/2 BR
 ASA# 3982857 J90 BD: 2/23/21

MR MENDEL DE KALLION 436 ET TNT E-Z-3 X360
 Sire: MR KALLION 1352 Dam: MISS 7P Z226
 MISS KALLION 1731 MISS 7P P409

Trait	CE	BW	WW	YW	MCE	Milk	MWW	Stay	CW	YG	Marb	Fat	REA	API	TI
EPD	9.4	2.7	76.5	123.5	4.5	20.4	58.6	6.2	29.7	-.36	-.12	-.091	.68	82	65

PE to our PB Angus herd sire MCKELLAR STUNNER 8185

142**MISS 7P J95**

Black Polled 1/2 SM 1/2 BR
 ASA# 3982848 J95 BD: 2/26/21

MR MENDEL DE KALLION 436 ET 5T MR R14
 Sire: MR KALLION 1352 Dam: MISS 7P C5
 MISS KALLION 1731 MISS 7P Y179

Trait	CE	BW	WW	YW	MCE	Milk	MWW	Stay	CW	YG	Marb	Fat	REA	API	TI
EPD	10.8	1.1	74.4	118.7	4.3	10.9	48.1	5.3	26	-.37	-.17	-.097	.63	82	64

PE to our PB Angus herd sire MCKELLAR STUNNER 8185. Due to calve in January 2023.

143**MISS 7P J106**

Black Scurred 1/2 SM 1/2 BR
 ASA# 3982846 J106 BD: 3/9/21

MR MENDEL DE KALLION 436 ET DIKEMANS SURE BET
 Sire: MR KALLION 1352 Dam: MISS 7P Y408
 MISS KALLION 1731 M243

Trait	CE	BW	WW	YW	MCE	Milk	MWW	Stay	CW	YG	Marb	Fat	REA	API	TI
EPD	11.7	0.2	73.7	118.1	6.1	18.2	55	4.1	23.1	-.39	-.07	-.099	.62	88	68

PE to our PB Angus herd sire MCKELLAR STUNNER 8185

144**MISS 7P J114**

Black Polled 1/4 SM 1/2 BR 1/4 AN
 ASA# 3982902 J114 BD: 3/19/21

MR MENDEL DE KALLION 436 ET MC BLACK SULLIVAN 0181
 Sire: MR KALLION 1352 Dam: MISS 7P A290
 MISS KALLION 1731 MISS 7P X175

Trait	CE	BW	WW	YW	MCE	Milk	MWW	Stay	CW	YG	Marb	Fat	REA	API	TI
EPD	10.7	2.3	82.2	139	5.1	12.6	53.7	4	39.9	-.23	-.01	-.060	.66	84	69

PE to our PB Angus herd sire MCKELLAR STUNNER 8185



Lot 145

145**MISS 7P J116**

Black Polled 1/2 SM 1/2 BR
 ASA# 3982829 J116 BD: 3/19/21

MR MENDEL DE KALLION 436 ET HOOK'S YELLOWSTONE 97Y
 Sire: MR KALLION 1352 Dam: MISS 7P D293
 MISS KALLION 1731 MISS 7P A338

Trait	CE	BW	WW	YW	MCE	Milk	MWW	Stay	CW	YG	Marb	Fat	REA	API	TI
EPD	10.6	1.9	82.8	133.8	5.4	14.4	55.8	4.3	30.5	-.33	-.10	-.082	.65	86	70

PE to our PB Angus herd sire MCKELLAR STUNNER 8185

146**MISS 7P J119**

Black Polled 1/4 SM 1/2 BR 1/4 AN
 ASA# 3982904 J119 BD: 3/22/21

MR MENDEL DE KALLION 436 ET EF COMPLEMENT 8088
 Sire: MR KALLION 1352 Dam: MISS 7P B298
 MISS KALLION 1731 MISS 7P Z223

Trait	CE	BW	WW	YW	MCE	Milk	MWW	Stay	CW	YG	Marb	Fat	REA	API	TI
EPD	13.7	-0.7	79	130.3	8.2	19.8	59.2	6.3	35.2	-.18	.08	-.047	.52	101	73

PE to our PB Angus herd sire MCKELLAR STUNNER 8185

147**MISS 7P J192**

Black Polled 1/2 SM 1/2 BR
 ASA# 4050138 J192 BD: 9/9/21

MR MENDEL DE KALLION 436 ET HOOK'S BEACON 56B
 Sire: MR KALLION 1352 Dam: MISS 7P D186
 MISS KALLION 1731 MISS 7P Z364

Trait	CE	BW	WW	YW	MCE	Milk	MWW	Stay	CW	YG	Marb	Fat	REA	API	TI
EPD	13.5	-0.5	75.3	121.1	7.4	15.2	52.8	5.1	27.8	-.33	.05	-.065	.75	95	70

PE to our PB Angus herd sire MCKELLAR STUNNER 8185 from 1/9/23 to 2/17/23.

148**MISS 7P J203**

Black Scurred 1/4 SM 1/2 BR 1/4 AN
 ASA# 4050143 J203 BD: 9/14/21

MR MENDEL DE KALLION 436 ET MYTTY IN FOCUS
 Sire: MR KALLION 1352 Dam: MISS 7P X252
 MISS KALLION 1731 MISS 7P L422

Trait	CE	BW	WW	YW	MCE	Milk	MWW	Stay	CW	YG	Marb	Fat	REA	API	TI
EPD	12.4	-0.6	71.4	120.1	7	12.4	48.1	5.2	27.2	-.15	-.01	-.056	.27	89	65

Bred AI on 4/28/22 to a black PB SM sire KBHR HONOR H060. PE to our PB Angus herd sire MCKELLAR STUNNER 8185 from 1/9/23 to 2/17/23.

149**MISS 7P J204**

Black Polled 1/4 SM 1/2 BR 1/4 AN
 ASA# 4050092 J204 BD: 9/14/21

MR MENDEL DE KALLION 436 ET MCKELLAR VRD 5031
 Sire: MR KALLION 1352 Dam: MISS7PW296
 MISS KALLION 1731 MISS 7P S291

Trait	CE	BW	WW	YW	MCE	Milk	MWW	Stay	CW	YG	Marb	Fat	REA	API	TI
EPD	8.1	2.6	65.3	108.6	5.1	14.5	47.1	4.4	22.6	-.22	-.13	-.062	.37	67	54

Bred AI to PB Angus sires EXAR UPSHOT 0562B on 1/2/23, then to MC BLACK SULLIVAN 0181 on 1/4/23. PE to our PB Angus herd sire MCKELLAR STUNNER 8185 from 1/9/23 to 2/17/23.

150**MISS 7P J210**

Black Polled 1/2 SM 1/2 BR
 ASA# 4050139 J210 BD: 9/15/21

MR MENDEL DE KALLION 436 ET GIBBS 2594Z SM UPG P342
 Sire: MR KALLION 1352 Dam: MISS 7P D365
 MISS KALLION 1731 MISS 7P U352

Trait	CE	BW	WW	YW	MCE	Milk	MWW	Stay	CW	YG	Marb	Fat	REA	API	TI
EPD	12.8	-0.6	72	116.6	6.8	13.6	49.6	4	26.3	-.40	-.13	-.098	.72	87	66

PE to our PB Angus herd sire MCKELLAR STUNNER 8185 from 1/9/23 to 2/17/23.

151**MISS 7P J216**

Black Scurred 1/2 SM 1/2 BR
 ASA# 4050077 J216 BD: 9/18/21

MR MENDEL DE KALLION 436 ET GIBBS 0689X CRIMSON TIDE
 Sire: MR KALLION 1352 Dam: MISS 7P A176
 MISS KALLION 1731 MISS 7P M327

Trait	CE	BW	WW	YW	MCE	Milk	MWW	Stay	CW	YG	Marb	Fat	REA	API	TI
EPD	11.1	1.7	80.7	132.7	4.9	13.5	53.8	5.2	37.8	-.31	-.13	-.083	.69	86	68

Bred AI on 12/9/22 to PB SM sire TJ GOLD 274G. PE to our PB Angus herd sire MCKELLAR STUNNER 8185 from 1/9/23 to 2/17/23..

152**MISS 7P J220**

Red Polled 1/4 SM 1/2 BR 1/4 AN
 ASA# 4050081 J220 BD: 9/22/21

MR MENDEL DE KALLION 436 ET B/R DESTINATION 727-928
 Sire: MR KALLION 1352 Dam: MISS 7P Y145
 MISS KALLION 1731 MISS 7P W92

Trait	CE	BW	WW	YW	MCE	Milk	MWW	Stay	CW	YG	Marb	Fat	REA	API	TI
EPD	10.3	1.3	75.4	121.4	6.8	13.4	51.1	4.6	32	-.21	-.01	-.059	.48	82	65

Bred AI to PB Angus sire EXAR UPSHOT 0562B on 12/26/22. PE to our PB Angus herd sire MCKELLAR STUNNER 8185 from 1/9/23 to 2/17/23.

153**MISS 7P J222**

Red Polled 1/4 SM 1/2 BR 1/4 AN
 ASA# 4050061 J222 BD: 9/24/21

MR MENDEL DE KALLION 436 ET PA POWER TOOL 9108
 Sire: MR KALLION 1352 Dam: MISS 7P E202
 MISS KALLION 1731 MISS 7P U337

Trait	CE	BW	WW	YW	MCE	Milk	MWW	Stay	CW	YG	Marb	Fat	REA	API	TI
EPD	12.6	0.3	71.8	118.5	5	12.7	48.5	4.8	28.2	-.21	.05	-.059	.44	90	66

PE to our PB Angus herd sire MCKELLAR STUNNER 8185 from 1/9/23 to 2/17/23.

154**MISS 7P J229**

Black Polled 1/2 SM 1/2 BR
 ASA# 4050175 J229 BD: 10/2/21

MR MENDEL DE KALLION 436 ET NLC BREAK FREE 72W
 Sire: MR KALLION 1352 Dam: MISS 7P A250
 MISS KALLION 1731 MISS 7P P71

Trait	CE	BW	WW	YW	MCE	Milk	MWW	Stay	CW	YG	Marb	Fat	REA	API	TI
EPD	13	0.2	71.9	119.7	6.9	15.2	51.1	6.4	24.9	-.39	-.13	-.089	.71	91	65

Bred AI to PB Angus sire EXAR UPSHOT 0562B on 12/14/22. PE to our PB Angus herd sire MCKELLAR STUNNER 8185 from 1/9/23 to 2/17/23.

155**MISS 7P J236**

Black Scurred 1/4 SM 1/2 BR 1/4 AN
 ASA# 4050065 J236 BD: 10/5/21

MR MENDEL DE KALLION 436 ET KESSLERS FRONTMAN R001
 Sire: MR KALLION 1352 Dam: MISS 7P A277
 MISS KALLION 1731 MISS 7P Y281

Trait	CE	BW	WW	YW	MCE	Milk	MWW	Stay	CW	YG	Marb	Fat	REA	API	TI
EPD	11.6	0.5	70.3	114.7	6	13.8	48.9	4.9	25	-.26	-.10	-.062	.54	80	61

Bred AI to PB Angus sire EXAR UPSHOT 0562B on 12/26/22. PE to our PB Angus herd sire MCKELLAR STUNNER 8185 from 1/9/23 to 2/17/23.

156**MISS 7P J245**

Black Horned 1/2 SM 1/2 BR
 ASA# 4050050 J245 BD: 10/8/21

MR MENDEL DE KALLION 436 ET PMS PRINCIPAL 301U
 Sire: MR KALLION 1352 Dam: MISS 7P B35
 MISS KALLION 1731 MISS 7P Z17

Trait	CE	BW	WW	YW	MCE	Milk	MWW	Stay	CW	YG	Marb	Fat	REA	API	TI
EPD	11.6	0.8	72.6	113.9	5.4	11.6	47.9	4.4	20.4	-.37	-.17	-.089	.61	81	63

Bred AI to PB Angus sire EXAR UPSHOT 0562B on 12/12/22. PE to our PB Angus herd sire MCKELLAR STUNNER 8185 from 1/9/23 to 2/17/23.

157**MISS 7P J252**

Black Scurred 1/4 SM 1/2 BR 1/4 AN
 ASA# 4050070 J252 BD: 10/12/21

MR MENDEL DE KALLION 436 ET SRS J914 PREFERRED BEEF
 Sire: MR KALLION 1352 Dam: MISS 7P A174
 MISS KALLION 1731 B D V N322 OF BANDO 155

Trait	CE	BW	WW	YW	MCE	Milk	MWW	Stay	CW	YG	Marb	Fat	REA	API	TI
EPD	11.9	0.3	69.1	113.6	6.3	13.2	47.7	4.3	19.8	-.19	-.02	-.059	.29	83	62

Bred AI to PB Angus sire EXAR UPSHOT 0562B on 12/28/22. PE to our PB Angus herd sire MCKELLAR STUNNER 8185 from 1/9/23 to 2/17/23.

158**MISS 7P J255**

Black Polled 1/4 SM 1/2 BR 1/4 AN
 ASA# 4049995 J255 BD: 10/14/21

MR MENDEL DE KALLION 436 ET MC BLACK SULLIVAN 0181
 Sire: MR KALLION 1352 Dam: MISS 7P B201
 MISS KALLION 1731 MISS 7P X70

Trait	CE	BW	WW	YW	MCE	Milk	MWW	Stay	CW	YG	Marb	Fat	REA	API	TI
EPD	12.3	0.1	72.9	121.3	6.1	13.9	50.3	3.6	34.8	-.18	-.06	-.049	.50	82	64

PE to our PB Angus herd sire MCKELLAR STUNNER 8185 from 1/9/23 to 2/17/23.

159**MISS 7P J256**

Black Polled 1/4 SM 1/2 BR 1/4 AN
 ASA# 4050156 J256 BD: 10/14/21

MR MENDEL DE KALLION 436 ET MR 7P A385
 Sire: MR KALLION 1352 Dam: MISS 7P D289
 MISS KALLION 1731 MISS 7P Y142

Trait	CE	BW	WW	YW	MCE	Milk	MWW	Stay	CW	YG	Marb	Fat	REA	API	TI
EPD	9.9	1.8	77.7	125.5	3.6	10.9	49.7	4.3	29.1	-.24	-.02	-.062	.53	81	65

Bred AI to PB Angus sires EXAR UPSHOT 0562B on 12/18/22, then to MC BLACK SULLIVAN 0181 on 1/4/23. PE to our PB Angus herd sire MCKELLAR STUNNER 8185 from 1/9/23 to 2/17/23.

160**MISS 7P J257**

Red Polled 1/2 SM 1/2 BR
 ASA# 4050038 J257 BD: 10/14/21

MR MENDEL DE KALLION 436 ET 5T MR R14
 Sire: MR KALLION 1352 Dam: MISS 7P Z357
 MISS KALLION 1731 MISS7PW201

Trait	CE	BW	WW	YW	MCE	Milk	MWW	Stay	CW	YG	Marb	Fat	REA	API	TI
EPD	12.5	0.3	66.8	106.7	5.6	8.9	42.2	5.4	20.8	-.35	-.15	-.095	.52	83	60

Bred AI to PB Angus sires EXAR UPSHOT 0562B on 12/12/22 and 12/22/22, then to MC BLACK SULLIVAN 0181 on 1/6/23. PE to our PB Angus herd sire MCKELLAR STUNNER 8185 from 1/9/23 to 2/17/23.

161**MISS 7P J259**

Black Polled 1/4 SM 1/2 BR 1/4 AN
 ASA# 4050179 J259 BD: 10/12/21

MR MENDEL DE KALLION 436 ET SRS J914 PREFERRED BEEF
 Sire: MR KALLION 1352 Dam: MISS 7P A174
 MISS KALLION 1731 B D V N322 OF BANDO 155

Trait	CE	BW	WW	YW	MCE	Milk	MWW	Stay	CW	YG	Marb	Fat	REA	API	TI
EPD	11.9	0.3	69.1	113.6	6.3	13.2	47.7	4.3	19.8	-.19	-.02	-.059	.29	83	62

Bred AI to PB Angus sire EXAR UPSHOT 0562B on 12/26/22. PE to our PB Angus herd sire MCKELLAR STUNNER 8185 from 1/9/23 to 2/17/23.

162**MISS 7P J260**

Black Horned 1/2 SM 1/2 BR
 ASA# 4049994 J260 BD: 10/15/21

MR MENDEL DE KALLION 436 ET TNT E-Z-3 X360
 Sire: MR KALLION 1352 Dam: MISS 7P Z134
 MISS KALLION 1731 MISS 7P U277

Trait	CE	BW	WW	YW	MCE	Milk	MWW	Stay	CW	YG	Marb	Fat	REA	API	TI
EPD	14.7	-1.8	68.9	113	7.6	19.9	54.4	5.7	28.3	-.34	-.08	-.085	.65	96	67

PE to our PB Angus herd sire MCKELLAR STUNNER 8185 from 1/9/23 to 2/17/23.

163**MISS 7P J262**

Red Scurred 1/2 SM 1/2 BR
 ASA# 4050073 J262 BD: 10/19/21

MR MENDEL DE KALLION 436 ET HOOK'S YELLOWSTONE 97Y
 Sire: MR KALLION 1352 Dam: MISS 7P D359
 MISS KALLION 1731 MISS 7P Z403

Trait	CE	BW	WW	YW	MCE	Milk	MWW	Stay	CW	YG	Marb	Fat	REA	API	TI
EPD	13.5	-0.9	75.4	119.1	7.5	16.2	53.9	5.1	28.3	-.36	-.09	-.090	.66	93	69

Bred AI to PB Angus sire EXAR UPSHOT 0562B on 12/14/22. PE to our PB Angus herd sire MCKELLAR STUNNER 8185 from 1/9/23 to 2/17/23.

164**MISS 7P J267**

Red Horned 1/2 SM 1/2 BR
 ASA# 4050071 J267 BD: 10/21/21

MR MENDEL DE KALLION 436 ET MR 7P Z260
 Sire: MR KALLION 1352 Dam: MISS 7P C67
 MISS KALLION 1731 MISS 7P Z32

Trait	CE	BW	WW	YW	MCE	Milk	MWW	Stay	CW	YG	Marb	Fat	REA	API	TI
EPD	9.8	2.3	80.2	133.8	5.8	18.3	58.4	4.7	33.8	-.38	-.09	-.094	.78	85	69

PE to our PB Angus herd sire MCKELLAR STUNNER 8185 from 1/9/23 to 2/17/23.

165**MISS 7P J268**

Red Polled 1/4 SM 1/2 BR 1/4 CS
 ASA# 4050022 J268 BD: 10/21/21

MR MENDEL DE KALLION 436 ET WS BEEF MAKER R13
 Sire: MR KALLION 1352 Dam: MISS 7P B176
 MISS KALLION 1731 MISS 7P W137

Trait	CE	BW	WW	YW	MCE	Milk	MWW	Stay	CW	YG	Marb	Fat	REA	API	TI
EPD	10	2.2	77.9	127.3	5.1	19	57.9	4.3	29.8	-.41	-.10	-.095	.80	78	65

PE to our PB Angus herd sire MCKELLAR STUNNER 8185 from 1/9/23 to 2/17/23.

166**MISS 7P J269**

Black Polled 1/2 SM 1/2 BR
 ASA# 4049988 J269 BD: 10/21/21

MR MENDEL DE KALLION 436 ET MCM TOP GRADE 018X
 Sire: MR KALLION 1352 Dam: MISS 7P Z169
 MISS KALLION 1731 MISS 7P M327

Trait	CE	BW	WW	YW	MCE	Milk	MWW	Stay	CW	YG	Marb	Fat	REA	API	TI
EPD	9.2	2.5	78.6	130.2	4.5	15.4	54.7	7.5	29	-.34	-.04	-.089	.62	92	68

Bred AI to PB Angus sire EXAR UPSHOT 0562B on 12/12/22 and 12/22/22. PE to our PB Angus herd sire MCKELLAR STUNNER 8185 from 1/9/23 to 2/17/23.

167**MISS 7P J276**

Black Polled 1/4 SM 1/2 BR 1/4 AN
 ASA# 4050030 J276 BD: 10/28/21

MR MENDEL DE KALLION 436 ET TJ HIGH BET 236X
 Sire: MR KALLION 1352 Dam: MISS 7P Z203
 MISS KALLION 1731 MISS 7P X245

Trait	CE	BW	WW	YW	MCE	Milk	MWW	Stay	CW	YG	Marb	Fat	REA	API	TI
EPD	12.1	-0.3	72	117.1	5.8	13.7	49.7	5	22.9	-.22	-.01	-.060	.39	88	65

Bred AI on 12/7/22 to PB SM sire TJ GOLD 274G. PE to our PB Angus herd sire MCKELLAR STUNNER 8185 from 1/9/23 to 2/17/23.

168**MISS 7P J281**

Red Scurred 1/2 SM 1/2 BR
 ASA# 4050142 J281 BD: 10/29/21

MR MENDEL DE KALLION 436 ET CCR GRAVITY 9064A
 Sire: MR KALLION 1352 Dam: MISS 7P D253
 MISS KALLION 1731 MISS 7P Z357

Trait	CE	BW	WW	YW	MCE	Milk	MWW	Stay	CW	YG	Marb	Fat	REA	API	TI
EPD	7.8	3.5	79.6	128.2	4.1	10.2	49.9	4.8	24	-.33	-.14	-.083	.56	77	64

PE to our PB Angus herd sire MCKELLAR STUNNER 8185 from 1/9/23 to 2/17/23.

169**MISS 7P J283**

Grey Polled 1/2 SM 1/2 BR
 ASA# 4050148 J283 BD: 10/29/21

MR MENDEL DE KALLION 436 ET WS ZENITH Z55
 Sire: MR KALLION 1352 Dam: MISS 7P D286
 MISS KALLION 1731 MISS 7P B277

Trait	CE	BW	WW	YW	MCE	Milk	MWW	Stay	CW	YG	Marb	Fat	REA	API	TI
EPD	10.3	2.2	88.1	142	5.9	15.3	59.2	5.9	33.7	-.41	-.09	-.094	.85	91	73

Bred AI to PB Angus sire EXAR UPSHOT 0562B on 12/14/22. PE to our PB Angus herd sire MCKELLAR STUNNER 8185 from 1/9/23 to 2/17/23.

170**MISS 7P J284**

Black Polled 1/4 SM 1/2 BR 1/4 AN
 ASA# 4050109 J284 BD: 10/29/21

MR MENDEL DE KALLION 436 ET CONNEALY COUNSELOR
 Sire: MR KALLION 1352 Dam: MISS 7P C9
 MISS KALLION 1731 MISS 7P A47

Trait	CE	BW	WW	YW	MCE	Milk	MWW	Stay	CW	YG	Marb	Fat	REA	API	TI
EPD	10.3	1.6	79.9	129.4	3.9	14.2	54.1	4.3	30.6	-.28	-.11	-.065	.63	79	66

Bred AI to PB Angus sire EXAR UPSHOT 0562B on 12/12/22. PE to our PB Angus herd sire MCKELLAR STUNNER 8185 from 1/9/23 to 2/17/23.

171**MISS 7P J289**

Red Horned 1/2 SM 1/2 BR
 ASA# 4050094 J289 BD: 10/30/21

MR MENDEL DE KALLION 436 ET 5T MR R14
 Sire: MR KALLION 1352 Dam: MISS 7P Z272
 MISS KALLION 1731 MISS7PW183

Trait	CE	BW	WW	YW	MCE	Milk	MWW	Stay	CW	YG	Marb	Fat	REA	API	TI
EPD	9.4	2.4	71.3	109.7	3.8	12.1	47.7	5.9	18.5	-.41	-.14	-.101	.61	79	61

Bred AI to PB Angus sire EXAR UPSHOT 0562B on 12/12/22. PE to our PB Angus herd sire MCKELLAR STUNNER 8185 from 1/9/23 to 2/17/23.

172**MISS 7P J295**

Black Polled 1/4 SM 1/2 BR 1/4 AN
 ASA# 4049990 J295 BD: 11/5/21

MR MENDEL DE KALLION 436 ET BC CLASSIC 385-7
 Sire: MR KALLION 1352 Dam: PMS CLASSICAL 942B
 MISS KALLION 1731 PMS LARRYE'S GIRL 767Z

Trait	CE	BW	WW	YW	MCE	Milk	MWW	Stay	CW	YG	Marb	Fat	REA	API	TI
EPD	9.2	2.9	88.3	136.8	3.7	15.4	59.5	2.5	29.7	-.23	-.05	-.054	.56	76	70

Bred AI to PB Angus sire EXAR UPSHOT 0562B on 12/12/22. PE to our PB Angus herd sire MCKELLAR STUNNER 8185 from 1/9/23 to 2/17/23.

173**MISS 7P J359**

Black Polled 1/2 SM 1/2 BR
 ASA# 4050048 J359 BD: 12/14/21

MR MENDEL DE KALLION 436 ET GW LUCKY BOY 252U
 Sire: MR KALLION 1352 Dam: MISS 7P Z152
 MISS KALLION 1731 MISS7PW150

Trait	CE	BW	WW	YW	MCE	Milk	MWW	Stay	CW	YG	Marb	Fat	REA	API	TI
EPD	12.6	-0.6	75.7	117.8	7	20	57.8	4.3	28.6	-.34	-.16	-.084	.65	86	67

Half blood Simbrah yearling heifer. This heifer has never been exposed and she is open.

174**MISS 7P J370**

Red	Polled	1/2 SM 1/2 BR
ASA# 4050112	J370	BD: 12/9/21

MR MENDEL DE KALLION 436 ET	MR NLC SUPERIOR S6018
-----------------------------	-----------------------

Sire: MR KALLION 1352	Dam: MISS7PW334
MISS KALLION 1731	MISS 7P P309

Trait	CE	BW	WW	YW	MCE	Milk	MWW	Stay	CW	YG	Marb	Fat	REA	API	TI
EPD	8.5	2.3	78.9	128.7	4.4	17.5	56.9	5.9	32	-.40	-.25	-.099	.78	76	63

Half blood Simbrah yearling heifer. This heifer has never been exposed and she is open.

175**MISS 7P J381**

Black	Polled	1/2 SM 1/2 BR
ASA# 4050104	J381	BD: 12/26/21

MR MENDEL DE KALLION 436 ET	DIKEMANS SURE BET
-----------------------------	-------------------

Sire: MR KALLION 1352	Dam: MISS 7P Z403
MISS KALLION 1731	DR MS 163J

Trait	CE	BW	WW	YW	MCE	Milk	MWW	Stay	CW	YG	Marb	Fat	REA	API	TI
EPD	8.6	2.5	76.3	117.9	4.7	17.4	55.5	5.6	20.5	-.37	-.10	-.091	.59	81	65

Half blood Simbrah yearling heifer. This heifer has never been exposed and she is open.

176**MISS 7P J394**

Black	Polled	1/2 SM 1/2 BR
ASA# 4050186	J394	BD: 12/31/21

MR MENDEL DE KALLION 436 ET	TNT E-Z-3 X360
-----------------------------	----------------

Sire: MR KALLION 1352	Dam: MISS 7P A333
MISS KALLION 1731	MISS 7P T323

Trait	CE	BW	WW	YW	MCE	Milk	MWW	Stay	CW	YG	Marb	Fat	REA	API	TI
EPD	8.9	2.6	76.7	124.5	3.1	13.4	51.7	7	27.9	-.37	-.11	-.094	.66	85	65

Half blood Simbrah yearling heifer. This heifer has never been exposed and she is open.

177**MISS 7P K20**

Black	Polled	1/2 SM 1/2 BR
ASA# 4050772	K20	BD: 1/11/22

MR MENDEL DE KALLION 436 ET	PMS PRINCIPAL 301U
-----------------------------	--------------------

Sire: MR KALLION 1352	Dam: MISS 7P Y246
MISS KALLION 1731	MISS 7P T138

Trait	CE	BW	WW	YW	MCE	Milk	MWW	Stay	CW	YG	Marb	Fat	REA	API	TI
EPD	9.2	2.2	76.1	120.5	3.9	15.5	53.5	5.8	23.5	-.39	-.19	-.092	.70	79	63

Half blood Simbrah yearling heifer. This heifer has never been exposed and she is open.

Thank You

for attending the

SEVEN
P
RANCH

29th Annual Spring Bull Sale

178**MISS 7P K47**

Red	Polled	1/2 SM 1/2 BR
ASA# 4050824	K47	BD: 1/25/22

MR MENDEL DE KALLION 436 ET	MR ISHEE DOUBLE UP 509
-----------------------------	------------------------

Sire: MR KALLION 1352	Dam: MISS 7P E174
MISS KALLION 1731	MISS 7P X181

Trait	CE	BW	WW	YW	MCE	Milk	MWW	Stay	CW	YG	Marb	Fat	REA	API	TI
EPD	10	1.6	80.6	132.4	4.3	20.3	60.6	4.6	28.2	-.34	-.09	-.083	.67	86	70

Half blood Simbrah yearling heifer. This heifer has never been exposed and she is open.

~ **NOTES** ~

PRINE[™]

TETRAPLOID
ANNUAL RYEGRASS



“Takes the Pressure and keeps on Producing.”

THE LEADING RYEGRASS IN TEXAS FOR THE 21ST CENTURY!

- ★ Top Production
- ★ Excellent Disease Resistance
- ★ High Sugar Content
- ★ Increased Plant Size
- ★ Wide Succulent Leaves

Better Grazing. Crown Rust Resistance. Excellent Winter Hardiness.



Apache Arrowleaf Clover

EAST TEXAS SEED COMPANY

P.O. Box 569
TYLER, TX 75710
903-597-6637

www.easttexasseedcompany.com
seeds@easttexasseedcompany.com

AVAILABLE AT YOUR LOCAL SEED DEALER
CALL 800-888-1371 FOR DETAILS

Allied Opportunities

Delivering the very best genetics and customer service.

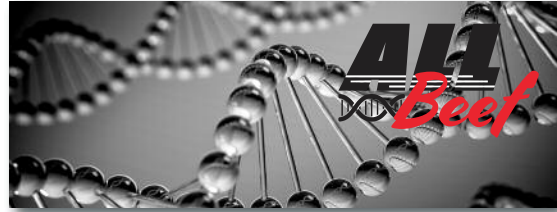
ALLIED SEMEN AND GENETICS

Dominate value and unequaled selection.
Contact us about options for 2022 and 2023.



ALL BEEF, LLC

A revolutionary new plan for the beef genetics business.
Become a part of this growing team!



ALLIED FEEDING PARTNERS, LLC

Seedstock providers doing what is right for their customers, their industry and their future. Call Marty.



FEEDER CATTLE MARKETING

Reach out to Clint Berry and his team for experienced and professional value-added options.



PROFESSIONAL DATA SERVICES

Is your business getting the most value from your data?
We can help. Contact Leoma.



FUTURE-FOCUSED GENETIC AUDITS

Genetics are a 10-20 year investment.
Advance to the next level with an Allied genetic audit.



Allied opportunities are focused on the future of genetic improvement and service - Join our team!



WWW.ALLIEDGENETICRESOURCES.COM

MARTY ROPP
406-581-7835

CLINT BERRY
417-844-1009

ROCKY FORSETH
406-590-7984

COREY WILKINS
256-590-2487

LEOMA WELLS
559-696-4941

JARED MURNIN
406-321-1542

Q:

How do you know our feed helps achieve reproductive success and maximizes the genetic potential of your herd?

A:



LIFE STAGE

Cow/Calf
Weaned Calf
Replacement Heifer
Grower/Finisher

ACCURATION®
RANGELAND®
WIND AND RAIN®

Animals speak louder than words™ Your local Purina dealer can tell you more about the Purina® All Seasons™ Cattle Nutrition Program than this ad ever could. Or visit ProofPays.com



FEED GREATNESS™

©2016 Purina Animal Nutrition LLC. All rights reserved.

CATTLE IN MOTION

This sale will be broadcast live at:

WWW.CATTLEINMOTION.COM

To view and bid on this sale live, simply log on to www.cattleinmotion.com and click on the sale that will be listed on the right hand side of the screen. If you have never been to the CIM site, you must first create an account (24 hours in advance) to view and bid on a sale. Then pay your \$1 lifetime verification if you wish to bid. If you have any question about online bidding contact Tim Lockhart at 888-554-8437.

LIVE AUDIO, LIVE BIDDING, LIVE BROADCAST

Be sure to view the videos prior to the sale at:

www.CattleInMotion.com



BUYER INFORMATION

HERD HEALTH

All cattle will sell with proper interstate health papers. All females were calfhood vaccinated. All sale cattle have been vaccinated with IBR, BVD, P13, Vibro Letpo 5, and eight-way black-leg. All bulls have been fertility checked and all heifers are reproduction tract examined. All sell guaranteed breeders. All eligible cattle will be brucellosis tested.

BULL CARE

Your yearling bull is a major investment. Experience has shown us that yearling bulls can function very well even under harsh environments. You can count on them to breed 20-25 females depending on the conditions. We have the following recommendations:

1. If possible, run your yearling bulls separate from older bulls during their first breeding season.
2. Make sure that your bulls gain weight in the fall after the breeding season before winter.
3. Feed energy supplementation (grain) beyond simply grass and protein to your yearling bulls. Avoid feeding the young bulls in the same pasture with older or horned bulls.

SIMMENTAL EPD EXPLANATIONS

Calving Ease Direct (CE-H) - predicts the average difference in ease with which a sire's calves will be born when bred to first-calf heifers. Expressed as percentage of unassisted births with a HIGHER value indicating greater calving ease.

Birth Weight (BW) - expressed in pounds and predicts the average difference that can be expected in an animal's offspring when compared with another animal in the same genetic evaluation. The LOWER the number the better here.

Weaning Weight (WW) - expressed in pounds and predicts the average difference in weight that can be expected between the progeny of animals in the same genetic evaluation of 205 days of age. The HIGHER the WW number, the more pounds weaned.

Yearling Weight (YW) - like Birth and Weaning Weight EPDs, Yearling Weight EPDs are expressed in pounds and predict the average differences that can be expected between progeny of animals at one year of age. Like weaning weight, the HIGHER the number, the more pounds at yearling time.

Maternal Calving Ease (MC) - predicts the average ease with which a sire's daughters will calve as first-calf heifers compared to the daughters of another sire in the same evaluation. Expressed as percentage of unassisted births. A HIGHER number here indicates a higher percentage of unassisted births.

Maternal Milk (MM) - expressed as pound of calf weaned by a bull's daughters. Reflects the average differences in weaning weight than can be expected in grandprogeny due to the milking ability of a bull's daughters.

Maternal Weaning Weight (MW) - this EPD value predicts the difference in average 205-day weight of a bull's daughters' calves compared to calves from daughters of all other bulls evaluated. The evaluation reflects both the maternal ability of the bull's daughters and the growth potential of their calves. When comparing maternal weaning weight EPDs of two sires, the larger maternal weaning weight EPD indicates heavier weaning weights due to the daughters' ability to produce heavier calves. Maternal Weaning Weight EPD is calculated by: $MWW\ EPD = MMK\ EPD + 0.5\ (WW\ EPD)$.

EPDS FOR CARCASS TRAITS

Explanations of the ultrasound measurements are as follows:

Marbling (MB)

The difference in marbling score expected in a bull's offspring compared to the offspring of other bulls in the population.

Yield Grade (YG)

The difference in yield grade expected in a bull's offspring compared to the offspring of other bulls in the population. Next sire summary YG EPD's will be used. These are figured by dividing the percent of retail cuts EPDs by -2.3.

Carcass Weight (CW)

The difference in carcass weight expected in a bull's offspring compared to the offspring of other bulls in the population.

All-Purpose Index (API)

Evaluates sires for use on the entire cow herd (bred to both Angus first-calf heifers and mature cows) with the portion of their daughters required to maintain herd size retained and the remaining heifers and steers put on feed and sold grade and yield.

Terminal Index (TI)

Evaluates sire for use on mature Angus cows with all offspring put on feed and sold grade and yield.

**FINAL DATA WILL BE AVAILABLE ON
SUPPLEMENT SHEET ON SALE DAY**



PO Box 568
Winona, TX 75792

PRESORTED
FIRST-CLASS MAIL
U.S. POSTAGE PAID
LivestockDirect
PERMIT NO. 29

Please bring this catalog with you to the sale.

29th Annual

SPRING BULL & FEMALE SALE

Saturday February 18, 2023 • 1:00 PM

At the ranch, 10678 FM 757, Winona, TX 75792